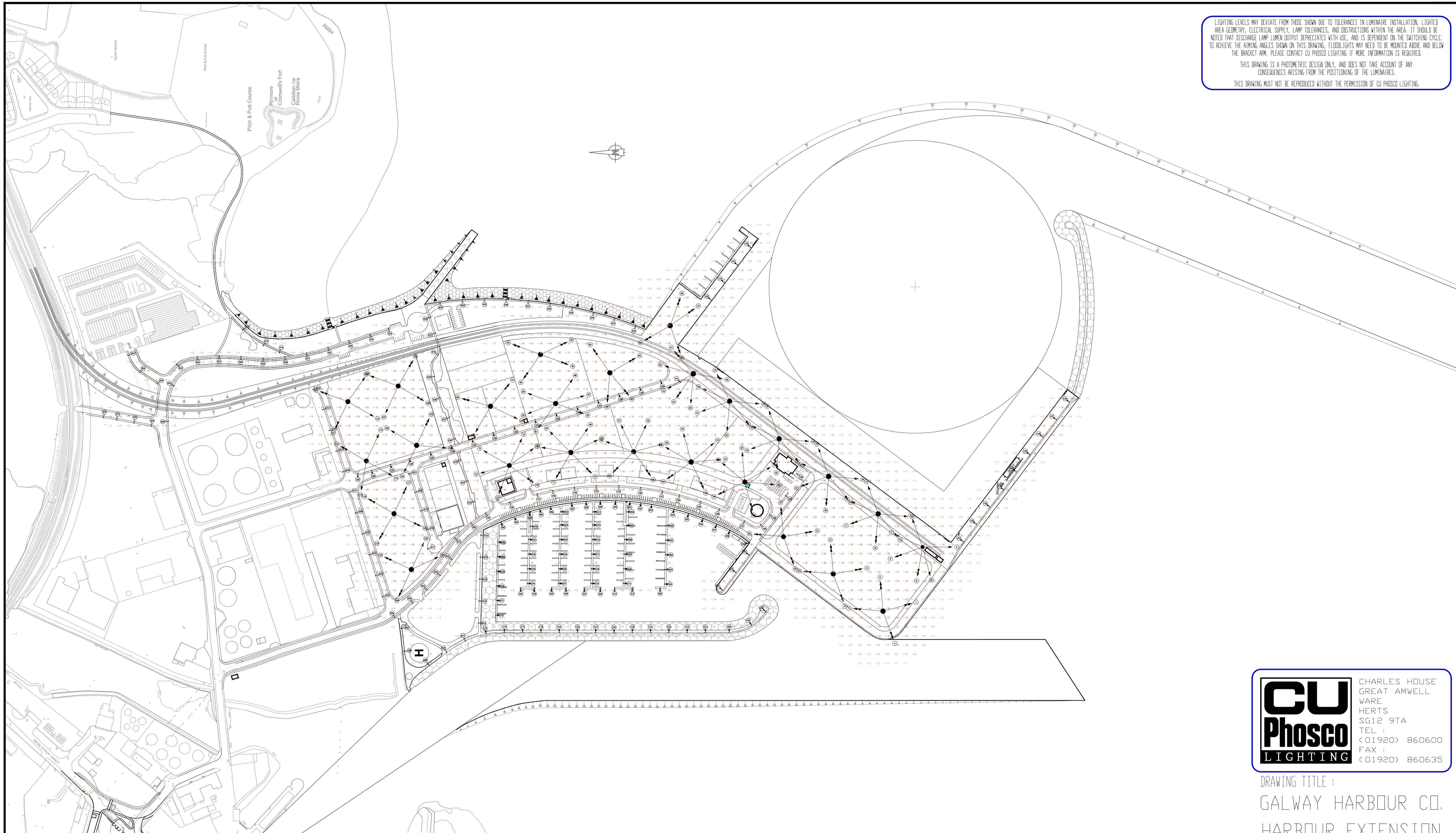


LIGHTING LEVELS MAY DEVIATE FROM THOSE SHOWN DUE TO TOLERANCES IN LUMINAIRE INSTALLATION, LIGHTED AREA GEOMETRY, ELECTRICAL SUPPLY, LAMP TOLERANCES, AND OBSTRUCTIONS WITHIN THE AREA. IT SHOULD BE NOTED THAT DISCHARGE LAMP LUMEN OUTPUT DEGRADATES WITH USE, AND IS DEPENDENT ON THE SWITCHING CYCLE. TO ACHIEVE THE AIMING ANGLES SHOWN ON THIS DRAWING, FLOOD LIGHTS MAY NEED TO BE MOUNTED ABOVE AND BELOW THE BRACKET ARM. PLEASE CONTACT CU PHOSCO LIGHTING IF MORE INFORMATION IS REQUIRED.

THIS DRAWING IS A PHOTOMETRIC DESIGN ONLY, AND DOES NOT TAKE ACCOUNT OF ANY CONSEQUENCES ARISING FROM THE POSITIONING OF THE LUMINAIRES.

THIS DRAWING MUST NOT BE REPRODUCED WITHOUT THE PERMISSION OF CU PHOSCO LIGHTING.



**CU Phosco LIGHTING**

CHARLES HOUSE  
 GREAT AMWELL  
 WARE  
 HERTS  
 SG12 9TA  
 TEL :  
 (01920) 860600  
 FAX :  
 (01920) 860635

DRAWING TITLE :  
 GALWAY HARBOUR CO.  
 HARBOUR EXTENSION  
 PROPOSED LIGHTING

DRAWN : A. C.      DATE : JAN 2014

SHEET No. 1 OF 4 SHEETS

SCALE : @ A1 1:2500    A3 1/5000

DRAWING No. : SHT: ISS: SUF:  
 LS12092-1