



THE PORT OF GALWAY
MARINE
EMERGENCY PLAN

' GALFIRE '

LIST OF PLAN HOLDERS

COPY	NAME	ORGANISATION	LOCATION
1	Mr. Joe Heffernan	Topaz Energy Ltd	
2	Mr. Liam Henry	Cold Chon Ltd	
3	Mr. Joe O'Neill	Galway City Council	
4	Ms. Martina Maloney	Galway County Council	
5	Mr. Donal O'Cualáin	Garda Síochána	
6	Mr. Michael Raftery	Fire Service	
8	Mr. Chris Reynolds	Irish Coast Guard	
9	Mr. John Falvey	MRSC Valentia	
10	Mr. Gerry Breheny	Chubb Security	



THE PORT OF GALWAY
MARINE
EMERGENCY PLAN

' GALFIRE '

REVISION PROCEDURE

This plan will be revised annually; such revisions will take account of experience gained from exercises and or actual incidents, changes in risk or terminal operations or legislation.

A formal review of the plan will be conducted at 5-year intervals.

AMENDMENT RECORD

Amendment No.	Date	Amended by (print name)	Signature
Review	March 02	Capt Brian Sheridan	
Sars Alert	April 03	Capt Brian Sheridan	
Formal Review	August 08	Capt Brian Sheridan	
Enwest Update	Nov 08	Capt Brian Sheridan	
Business Continuity - Swine Flu	July 09	Capt Brian Sheridan	
Review	Jan 2011	Capt Brian Sheridan	



THE PORT OF GALWAY
MARINE
EMERGENCY PLAN

' GALFIRE '

1.1	Introduction
1.1.1	Purpose of the plan
1.1.2	Area of Operation
1.1.3	Interfacing Emergency Plans
1.1.4	Plan Format

1.2	Roles and Responsibilities of Involved Parties
1.2.1	Emergency Consortium
1.2.2	On-Scene Commander
1.2.3	Irish Coast Guard (ICG)
1.2.4	Environmental Protection Agency
1.2.5	Department of the Marine & Natural Resources

1.3	Risk Assessment
1.3.1	Introduction
1.3.2	Resources at Risk
1.3.3	Risk Assessment Summary



THE PORT OF GALWAY
MARINE
EMERGENCY PLAN

' GALFIRE '

2.1	Communications Plan
2.1.1	Use of this section
2.1.2	Reporting Requirements
2.1.3	Initial Sitrep
2.1.4	Situation Report (Sitrep)
2.1.5	Alarm & Call Out Procedure
2.1.6	Summoning Assistance
2.1.7	Command & Control
2.1.8	Survivors & Rescue
2.1.9	Anti Pollution Measures
2.1.10	Incident Involving Dangerous Goods
2.1.11	Facilities Available for Emergency Management
2.2	Use of this Section
2.2.1	Media & Interview Guidelines
2.2.2	Press Release



THE PORT OF GALWAY
MARINE
EMERGENCY PLAN

' GALFIRE '

3.1	Contacts
3.2	Equipment resources
3.2.1	Response Equipment
3.2.1.1	Pollution Response Equipment
3.2.1.2	Fire Fighting Foam
3.2.1.3	Ancillary Equipment



THE PORT OF GALWAY
MARINE
EMERGENCY PLAN

' GALFIRE '

Index	Appendices
A	Map of Galway Harbour Map of Claddagh Quays Admiralty Chart of Galway Harbour (BA 1984) Admiralty Chart of Galway Bay (BA 2173) Drawing of Embarkation Area at Lay By Berth
B	List of Available Craft
C	Casualty landing Sites (including helicopter landing areas)
D	Communications Channels
E	Fire Fighting and Emergency Evacuation Plan



THE PORT OF GALWAY
MARINE
EMERGENCY PLAN

' GALFIRE '

1 INTRODUCTION

1.1.1 PURPOSE OF THE PLAN

This plan is provided to assist the Harbour Master of the Galway Harbour Company in dealing with any major marine emergency which occurs within his jurisdictional area of responsibility. Its primary purpose is to set in motion the necessary actions to minimise the overall impact of the emergency and to mitigate its effects. Effective planning ensures that the necessary actions are taken in a structured, logical and timely manner.

This plan guides the Harbour Master and other involved personnel through the decisions, which will be required in an incident response. The tables, figures and checklists provide a visible form of information, thus reducing the chance of oversight or error during the early stages of dealing with an emergency situation.

The total provision for major emergency planning is the collective co-ordinated plans of Galway City Council, Galway County Council, Western Health Board, Galway Fire and Rescue Services and Gardai in an area where an emergency occurs.

For the plan to be effective, it must be:

- familiar to those with key response functions in the Harbour
- regularly exercised; and,
- reviewed and updated on a regular basis.

1.1.2 AREA OF OPERATION

The plan details the contingency arrangements for responding to an actual or threatened marine emergency with the defined area.

The Harbour limits of jurisdiction are the waters of the Bay of Galway which lie Eastwards of an imaginary line drawn from Kilcolgan Point to Seaweed Point including Galway Harbour.



THE PORT OF GALWAY
MARINE
EMERGENCY PLAN

' GALFIRE '

1.1.1.3 INTERFACING EMERGENCY PLANS

The National Emergency Plan
Galway City Major Emergency Plan
Galway County Council Emergency Plan
Topaz Energy Limited Terminal Emergency Plan
Fareplay Terminal Emergency Plan
Enwest Limited Terminal Plan - top tier site
External Emergency Plan
Cold Chon Emergency Plan

1.1.1.4 PLAN FORMAT

The plan has three elements:

Element 1: Strategy Plan - (Section 1)

Describes the purpose and scope of the plan, including the geographical coverage. It shows the relationship of the plan with related plans. Also included are perceived risks and the incident response structure.

Element 2: Action Plan - (Section 2)

Sets out the emergency procedures that will allow rapid mobilisation of resources and an early response to the situation.

Element 3: Data Directory - (Section 3)

Contains all supplementary information relevant to the performance of the plan such as; contact directory and resources.

1.2 ROLES AND RESPONSIBILITIES

1.2.1 Emergency Consortium

In the event of an emergency The Harbour Master can in addition to his own resources and those of the Fire Brigade, Gardai, Galway City Council and Galway County Council, call upon the resources of the major port users, namely Topaz Energy limited, Fareplay Terminal, Enwest Terminal and Cold Chon Limited.

1.2.2 On-Scene Commander



THE PORT OF GALWAY
MARINE
EMERGENCY PLAN

' GALFIRE '

The On-Scene Commander will be the Harbour Master or any Officer designated by the Harbour Master to take charge of the emergency. He shall designate tasks as appropriate and establish a communications base (**Emergency Response Centre**) to co-ordinate all radio traffic at the scene between watercraft, shore radio and the command centre. For an incident offshore the ICG may appoint the Master of another vessel to be On-Scene Commander in which case the Harbour Master would become the local area on-shore co-ordinator. In the event of Harbour Master not being available the following will be called to act in his absence:

Capt. Robert Ellis and or Capt. Kevin Walsh

The keyword 'Galfire' is to be added to any emergency message to the Gardai, Fire Brigade and Ambulance to indicate that the standard emergency message is about to be broadcast.

The Emergency Response Centre will have representatives of:

- (a) Harbour Master
- (b) Gardai
- (c) Fire Brigade
- (d) Ambulance or medical adviser
- (e) Pollution Officer
- (f) Department of the Marine
- (g) Local Authority Liaison Officer

1.2.3 Irish Coast Guard (IRCG)

The Irish Coast Guard, under the directorship of Capt. W.A. Kirwan is responsible for all marine emergencies, including air/sea rescue, oil spill response etc. They are an agency of the Department of Transport who have ministerial responsibility for marine emergencies.

1.2.4 Environmental Protection Agency (EPA)

Under normal circumstances, the Environment Protection Agency has no function during marine pollution incidents, but may be called upon by the Department of Transport and/or ICG to provide assistance as required.

1.2.5 Department of Transport

The Department of Transport under the directorship of the Minister for Transport has overall responsibility for dealing with all aspects of oil pollution. This holds significant importance as the importation of refined products at the Port of Galway is currently 850,000 tonnes annually and as such there is a high risk of an oil pollution should an emergency occur involving an oil tanker.



THE PORT OF GALWAY
MARINE
EMERGENCY PLAN

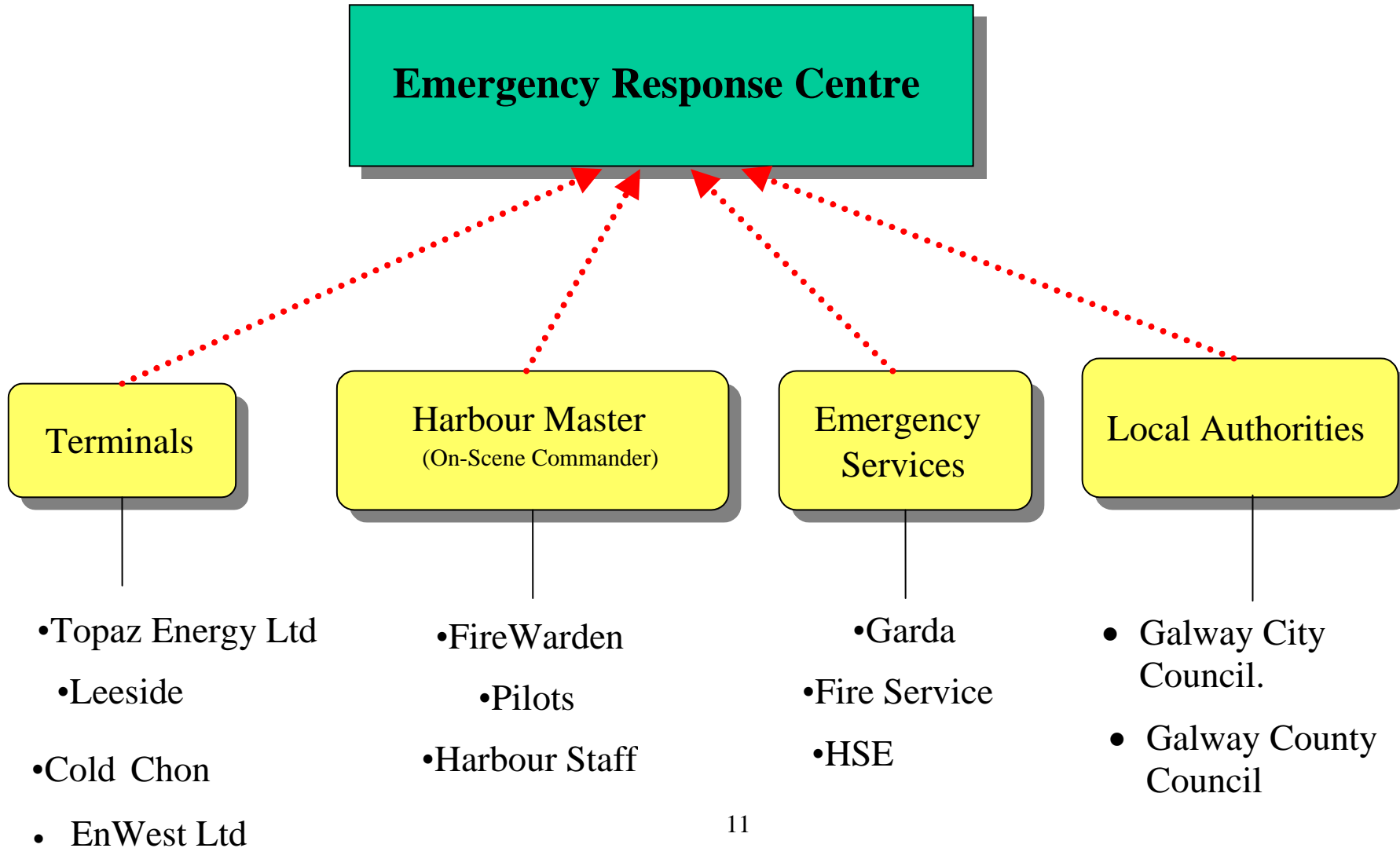
' GALFIRE '



THE PORT OF GALWAY
MARINE
EMERGENCY PLAN

' GALFIRE '

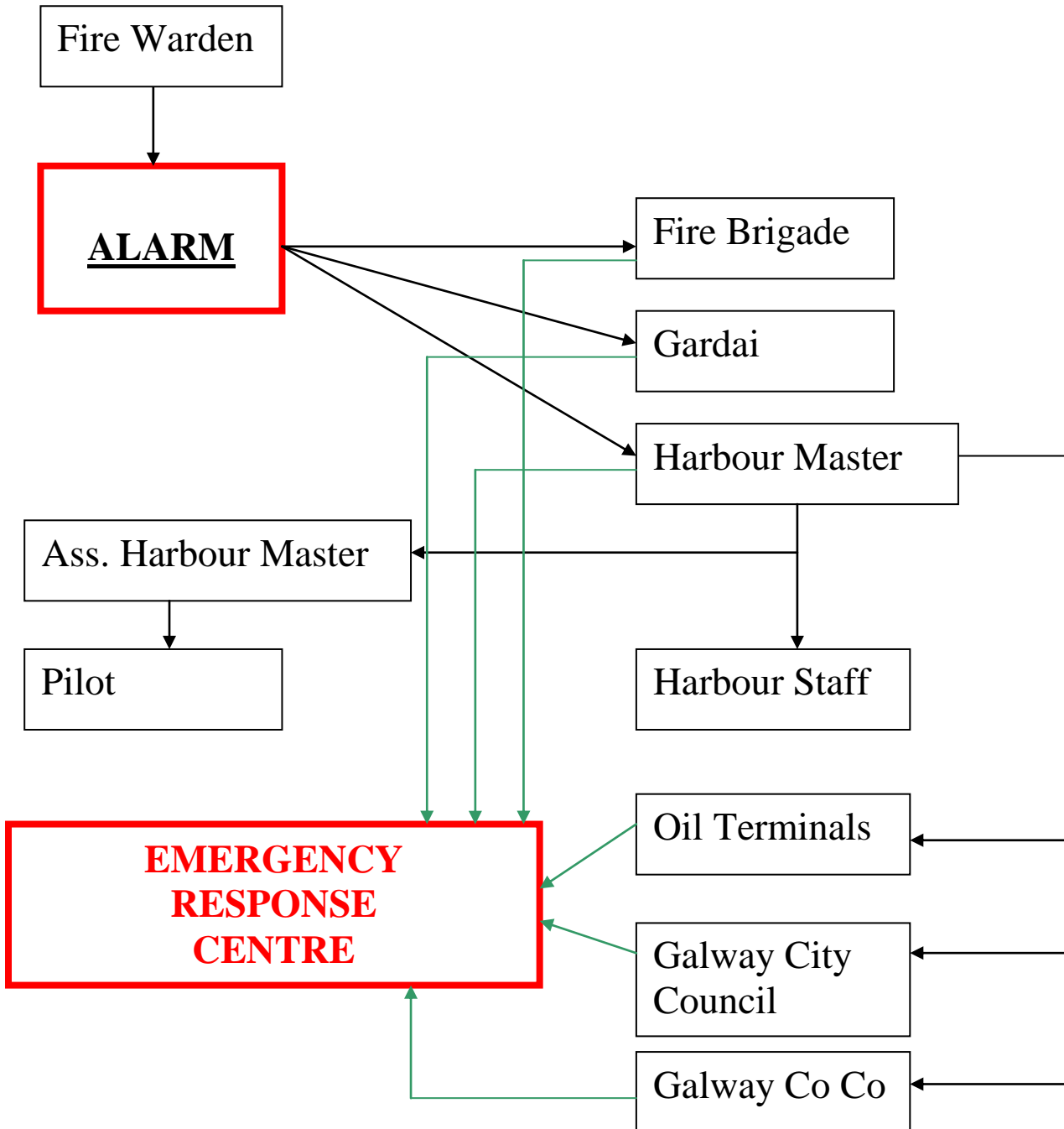
Figure 1.2.1 EMERGENCY RESPONSE CENTRE





' GALFIRE '

Figure 1.2.2 'GALFIRE' EMERGENCY PLAN ALERT PROCEDURE





THE PORT OF GALWAY
MARINE
EMERGENCY PLAN

' GALFIRE '

1.3 RISK ASSESSMENT

1.3.1 Introduction

Galway harbour is situated on the River Corrib in a sheltered position at the innermost eastern corner of Galway Bay, on the West Coast of Ireland. Its location is ideal for servicing oilrigs and drilling ships. The harbour is used extensively by seismic survey, research and supply ships and is the base for several operating oil companies.

Vessels of up to 10,000 dwt can call at Galway. The total quay length will allow up to seven vessels to berth in the inner dock at any one time.

Galway is also becoming popular with passenger cruise liners who now use the port on a regular basis. The cruise liners generally anchor in a position SSW of Mutton Island and bring its passengers ashore by tender.

The size of the largest vessel that can be accommodated will be governed by three factors:

1. The length of the turning area, 146m
2. Depth of water 8.50 (springs) and 7.00 (Neaps)
3. Width of the entrance, 19.81m

The harbour is tidal; however a high water level is maintained inside the inner docks by dock gates.

1.3.2 Resources at Risk

All tanker operations occur within the inner harbour. Should an incident occur while a tanker is discharging at Dun Aengus North the following resources are at risk:

- Residents at the 'Cé na Mara' Apartments
- Residents at the 'Harbour Hotel'
- The Tank Farm of Topaz Energy Limited
- Industry and Shipping

Other resources that may be affected should a marine emergency occur in Galway Bay would be:

- Nature Conversation
- Fisheries and Aquaculture



THE PORT OF GALWAY
MARINE
EMERGENCY PLAN

' GALFIRE '

- Recreation and Amenity

1.3.3 Risk Assessment Summary

The majority of vessel movements at the port of Galway are those of Oil Tankers. However, there are many potential situations which can be considered as major emergencies, such as:

- A fire in the dock on a vessel other than a tanker.
- A fire on an oil tanker which is not discharging.
- A large ship seeking refuge or a disabled ship being driven ashore.
- Dangerous goods being washed ashore, perhaps in a container or tank container, which required evacuation of the people ashore. Once ashore it is the responsibility of the local authority.
- A coach or bus full of people in the water.
- Large scale oil pollution coming ashore.
- Collision between ships and fire with large numbers of survivors.
- Fire on a visiting mini-cruise line vessel, in the dock or out in the bay.
- Fire/explosion on a cargo vessel in the Bay.
- Stability problems, capsize of a vessel with persons trapped within the hull.
- A fire or other incident in the docks requiring population precautionary evacuation (toxic/irritant gas from burning fertilisers).
- A ship requesting assistance with leaking dangerous goods.
- A passenger aircraft downed in the bay.
- The worst case scenario would be a collision between a passenger vessel and a tanker resulting in a holed cargo tank. This might lead to fire and or explosion involving both vessels with resultant oil pollution.
- A terrorist attack.

All of the above scenarios have occurred at other locations worldwide.

What is needed to deal with the above scenarios is a call out system to get together the expertise, a list of resources and contact numbers, an identified control centre to which all information and requests are sent and from which information and instructions can be received and a recognised control structure so there is no doubt in anyone's mind as to who is in charge.

A Terrorist Attack

The main target areas for a terrorist attack are that of the 3 oil terminals located in the port. All Terminals have continual



THE PORT OF GALWAY
MARINE
EMERGENCY PLAN

' GALFIRE '

security in place. All employees have been trained to be ever vigilant with suspect persons and packages. Security barriers and gates are in place and anti-terrorist measures are incorporated into the terminals emergency plans.

Whenever an Oil Tanker is discharging at Dun Aengus North, a Fire Warden is on duty. He has been trained to inform the emergency services should a terrorist attack be suspect.

In dealing with the fall out of a terrorist attack, the port emergency plan 'Galfire' will be activated and will be dealt with as those other scenarios as set out in 1.3.3 above.

Foot & Mouth

The Department of Agriculture, Fisheries & Food are the responsible body to give advice and procedures in the event of a FMD threat or outbreak. The Port Authority will carryout whatever instructions are made of them with regard to the control of shipping and their crews.

Infectious Diseases - Swine Flu/Avian Flu

What is flu?

Flu is an acute respiratory illness caused by infection with an influenza virus. There are three types in all with influenza A and influenza B causing the majority of infections. A third type, influenza C, is rarely reported as a cause of human illness.

Flu is characterised by sudden onset of symptoms which include a temperature of 38°C or more with a dry cough, headache, sore muscles and sore throat. Cough is often severe and protracted, but otherwise the disease is self-limiting in those without underlying illness, and recovery is usually within 2 to 7 days.

What is avian flu?

Avian influenza ("bird flu") is an infectious disease of birds caused by type A strains of the influenza virus. It can affect all species of birds and other animals and can very rarely infect humans.

Infection causes a wide spectrum of symptoms in birds, ranging from mild illness to a highly contagious and rapidly fatal disease resulting



**THE PORT OF GALWAY
MARINE
EMERGENCY PLAN**

' GALFIRE '

in severe epidemics. The avian influenza strain which is causing most concern at the moment is A/H5N1

In the case when a known infectious disease has been detected or the Port has been informed of such disease, then the Harbour Master will contact the Health Service Executive for guidance. The Health Service Executive may initiate their emergency plan if warranted.

Local agents have been instructed to request the Masters' of visiting ship to inform the Port Authority if a known disease exists on board their ships. In such a case, the port doctor and the Health Service Executive to be advised.

In the event of a flu pandemic and the resultant sickness and absenteeism of core staff, the Chief Executive/Harbour Master will decide in consultation with the Health Service Executive and the office of emergency planning if the administration of the port is controlled remotely from home.

The key personnel identified by the Galway Harbour Company are the Chief Executive, Harbour Master, pilots, Pilotage Coxwains, Crane Driver.

Galway Harbour is a small commercial port. A direct result of this is the over lapping of roles and responsibilities which are performed on a day to day basis and throughout the year to cover annual holidays. The consequence of this is that the port management structure is highly flexible and provides great continuity of the decision process.

- Notices posted at the harbour office to advise Galway Harbour Company employees of the signs to watch out for in detection flu symptoms.
- Ships agents advised of procedures should crew members from ships report unwell and showing symptoms which may indicate influenza. All ships agents have been forwarded dept of transport/Health Service Executive Notices for promulgation to ships calling at the port.
- The port doctor [Dr. Greg little] has been briefed of the current situation regarding swine flu.
- Ships with suspected cases of swine flu onboard are to report this to the agent in advance of arrival at the pilot station and to hoist the 'Q' flag. These vessels may be requested to remain at anchor after consultation with the HSE and port doctor.



**THE PORT OF GALWAY
MARINE
EMERGENCY PLAN**

' GALFIRE '

- All personnel to be advised when appropriate to have the recommended inoculations.
- Where appropriate, port staff deemed may be requested to wear face masks and gloves.
- Direct contact has been made with Mr. Paul Hickey [086 8625467] of the Health Service Executive regarding information update.
- Only essential personnel will be allowed access to the harbour office to minimise spread of the swine flu.
- For Pilotage relief, strict separation of pilots will be maintained to avoid cross contamination. The Harbour Master can act as pilot whenever required.
- All office computer networks, CCTV can be accessed from outside the office to the homes of the Chief Executive and the Harbour Master.
- Outdoor staff is trained so as to be able to operate all equipment which will ensure continuity of operations should personnel become ill.

Local agents have been instructed to request the Masters' of visiting ship to inform the Port Authority if a known disease exists on board their ships. In such a case, the port doctor and the Health Service Executive to be advised.

2.1 COMMUNICATIONS PLAN

2.1.1 Use of this section

Effective communications are vital during any emergency, hence the need for a communications plan.

The components of a communications plan will include:

- Notification Procedure Refer section 2.1.2
- Situation Reports Refer section 2.1.3 & 2.1.4
- Alarm and Call out Procedure Refer section 2.1.5
- Contact Directory Refer section 3.1



THE PORT OF GALWAY
MARINE
EMERGENCY PLAN

' GALFIRE '



THE PORT OF GALWAY
MARINE
EMERGENCY PLAN

' GALFIRE '

2.1.2 Reporting Requirements

Organisation	Probable / Possible	Level 1	Level 2	Level 3
IRCG	✓	✓	✓	✓
Topaz Energy Terminal		✓	✓	✓
Fareplay Oil Terminal		✓	✓	✓
EnWest Oil Terminal		✓	✓	✓
Port Users			✓	✓
Galway City Council			✓	✓
Galway County Council			✓	✓
Garda			✓	✓
Fire Service			✓	✓
Department of the Environment				✓

Level 1 Incident

A level 1 incident corresponds to any incident involving an oil tanker, which had the potential to cause damage to property. Level 1 incidents can be handled directly by the Galway Harbour Company and Oil Company involved.

Level 2 Incident

This requires the assistance of the Gardai, Fire Brigade and Ambulance Services. The County Council will be notified but may not have any direct role to play in the management of this incident.

Level 3 Incident

This requires a response involving the active assistance of all representatives of the Emergency Response Centre including proper co-ordinated aid from the IRCG and the Department of Transport.



THE PORT OF GALWAY
MARINE
EMERGENCY PLAN

' GALFIRE '

2.1.3 INITIAL SITREP

INITIAL SITREP			
To MRCC			
From Authority			
POLREP Number		Date	
1	DATE AND TIME OF OBSERVATION		
2	NAME AND ADDRESS OF OBSERVER		
3	POSITION OF EMERGENCY Give position relative to prominent or well-known place. If ashore, give the name and nature of the beach or coast		
4	WIND DIRECTION AND FORCE		
5	STATE OF TIDE AND SEA (flood or ebb tide, rough, mod, or calm sea, any swell)		
6	WEATHER CONDITIONS		
8	TYPE OF EMERGENCY No. of persons at risk if known		
9	DANGEROUS GOODS INVOLVED If known, type of ship, installation etc. If unknown, give apparent direction of origin.		
10	CAUSE OF EMERGENCY If a vessel, name of vessel, nationality etc.		
11	DETAILS OF OTHER VESSELS IN VICINITY		
12	REMEDIAL ACTION PROPOSED		
13	Other information		

SIGNED _____
TITLE _____



THE PORT OF GALWAY
MARINE
EMERGENCY PLAN

'GALFIRE'

2.1.4 Situation Report (SITREP)

Situation Report (SITREP)		
TO MRCC DUBLIN	Phone: 01 - 6620922. Fax 01 - 6620795	
SITREP NUMBER	DATE	REFERS
AUTHORITY	DATE	
INCIDENT BEGAN	ENDED	
ACTION TAKEN DURING PAST 24 HOURS		
PROPOSED ACTION FOR NEXT 24 HRS		
ANY REQUIREMENTS FROM IRCG/ MRCC		
ADDITIONAL COMMENTS		
SIGNED		
TO BE NUMBERED AND RETURNED DAILY TO MRCC AT 1700 HRS		



THE PORT OF GALWAY
MARINE
EMERGENCY PLAN

' GALFIRE '

2.1.5 Alarm and Call out Procedure.

The initial alarm message is intended to alert the various Authorities and Companies involved that a marine emergency has occurred and assistance may be required. It is the executive order for the Emergency Director, On Scene Commander and other Authorities named in this plan to close up their emergency response teams.

The standard emergency message.

ACTIVATION

ALARM, ALARM, ALARM - EMERGENCY GALFIRE -
FIRE/EXPLOSION ONBOARD (VESSEL) INVOLVING THE CARGO, ACCOMMODATION,
FUNNEL OR MACHINERY SPACES OR,
COLLISION BETWEEN (VESSEL/S) IN POSITION ()
Message to indicate whether vessel holed or aground.

CANCELLATION

As soon as the emergency is over the same callout procedure must be followed giving the message:

"GALFIRE EMERGENCY CANCELLED"

- A. Harbour Master or his deputy will inform Fire Brigade and Local Coast Radio Station: Phone No. (day) 091-562329/561874; (night) 091-520034; 087/6646633
V.H.F. Channel - 16, 12, 6, 14.
- B. Galway Fire & Rescue who will advise other local authority brigades and will inform Local Coast Radio Station and Harbour Master:
Phone No. 091-585555/568984.
- C. IRCG who will inform RNLI and other SAR: Phone No. 066 9476109 /
999/112 // Fax: 066 9476962
- D. Public telephone emergency services operator who will be requested to pass on alarm message to 999
 - (i) Ambulance service, will pass message to other ambulance controls and inform hospitals: 091-524222
 - (ii) The Gardai who will contact their emergency command structure:
091-563161-6
- E. Local Authority Pollution Officer: 091-563151
- F. Military: 091-751156



THE PORT OF GALWAY
MARINE
EMERGENCY PLAN

' GALFIRE '

- G. RNLi Galway City local Secretary 567707: Galway City Lifeboat Station 091 567755
RNLi Aran islands 099-61156
- H. Local ferry companies, and other companies who have craft available. Appendix Beta, list of normally available craft with pumping ability etc.

2.1.6 Summoning Assistance

In the case of a merchant or privately owned vessel the responsibility for summoning assistance rests initially with the Master, Owner or Agent. In an emergency involving the safety of navigation the Harbour Master may summon assistance on behalf of a vessel.

IRCG will request immediate launch of RNLi Lifeboats, SAR flights and helicopters as necessary and available.

Vessels in the vicinity as contacted by the Coast Radio Station. Additional craft may be called out from the list in Appendix Beta.

Pilotage: there are pilots available at one hour's notice.

2.1.7 Command and Control

Overall Command

There are two possible situations

- a) An incident in the enclosed dock or entrance channel
- b) An incident in the Bay

Existing emergency plans cover both situations in the initial stages. The purpose of this plan is to cover the situation where an incident occurs which would be beyond the normal ability of local emergency services to cope and would probably stretch the hospital and ambulances. There may also be a need to co-ordinate anti pollution measures. Any of these would necessitate the setting up of a local maritime emergency control and liaison centre.



THE PORT OF GALWAY
MARINE
EMERGENCY PLAN

' GALFIRE '

In the event of a Galfire emergency, the emergency control room will be at the Harbour Office.

The Harbour Master will work closely with the Senior Fire Officer when dealing with a fire on board a vessel. The Master of the vessel will have responsibility to combat the fire initially onboard his ship. The Harbour Master will have the responsibility in matters relating to the ~~movement~~ of vessels and for the safety of navigation. Any outside salvage or pollution expert will be advisory to the group.

Emergency Control Staff

Any emergency in the port should cause the Harbour Office to be manned by a person who would contact persons listed in Section 3.

Assembly and embarkation point for fire fighting crews and equipment, oil pollution clearance units, salvage equipment and craft for sea transport will be established at the trawler lay-by and outside the dock gates. (See appendix E)

Terms of reference for the On Scene Commander

He will have control of the movement of vessels and aircraft at the scene and may establish safety exclusion zones, but will not be in charge of fire fighting which will be the responsibility of the Ship's Master, assisted by the Fire Brigade.

2.1.8 Survivors and Rescue

Survivors are to be landed at places designated by the Harbour Master, chosen for ease of access by boat and ambulance. (See Appendix C).

Within the port a reception area for survivors will be set up in the docks where triage will be performed on casualties. Communication required with Emergency Control Centre to assess the need for medical assistance, crowd or traffic control

Casualty cards will be made out at the point of first treatment.

All landed foreign survivors to be reported to immigration (Gardai).

A survivor is anyone who has survived.

A casualty is a survivor who is injured.



THE PORT OF GALWAY
MARINE
EMERGENCY PLAN

' GALFIRE '

2.1.9 Anti Pollution Measures

Sensitive Areas to Protect:

Rusheen bay Bird Sanctuary
Silver Strand
Salthill Promenade
Grattan Beach

Beaches that could be used as "Sacrificial Beach":

- None - Possible beach at South Park

List of available Resources:

Plant and Machinery made available by
Galway City Council
Galway County Council
IRCG
The National Response Team
The Naval Service

Contacts for help from outside:

Galway City Council
Galway County Council
Clare County Council
IRCG
Department of the Marine
The Naval Service

Refer to the Galway Harbour Company '*Oil Spill Contingency Plan*'
for further action in case of oil pollution.

2.1.10 Incident Involving Dangerous Goods

Whether or not on fire.

Possibly warn hospitals of likelihood of casualties; give correct
technical name of substances involved if known.

Technical advice and/or assistance available from:

Harbour Office



THE PORT OF GALWAY
MARINE
EMERGENCY PLAN

' GALFIRE '

Department of the Marine

Local Authorities

IMDG CODE - EMERGENCY PROCEDURES - MEDICAL FIRST AID GUIDE

2.1.11 Facilities Available for Emergency Management

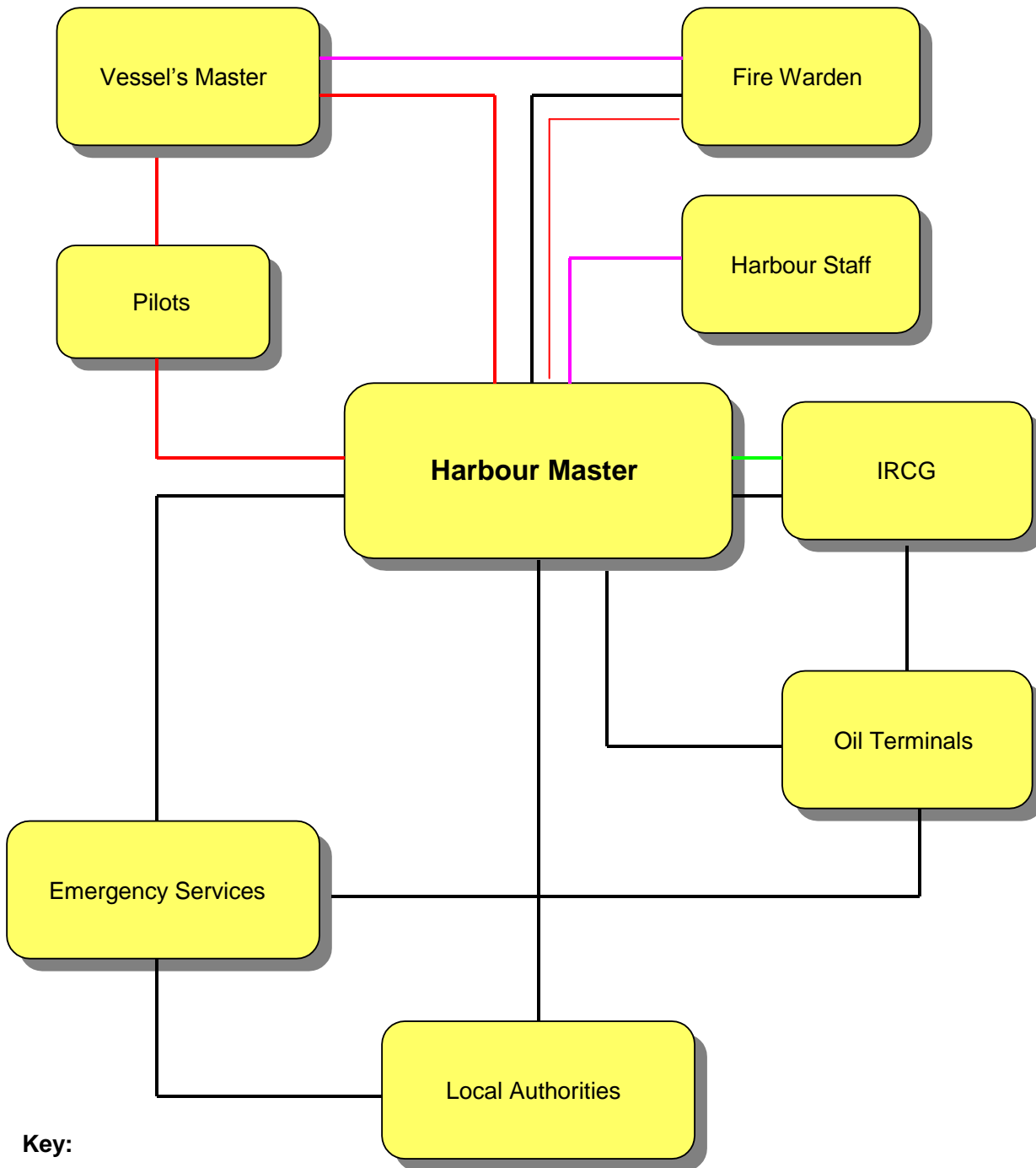
1. A package containing; logbook, charts and plans for the On-Scene Commander.
2. At the Harbour Office; Galfire Plan, Logbook, charts, Tide tables IMDG Codes and emergency action schedules details for liaison with civil emergency planning organisation.
3. Portable communication equipment (See Appendix D)
4. Media representatives will be directed to;
(An area away from the scene with means of communication).



THE PORT OF GALWAY
MARINE
EMERGENCY PLAN

'GALFIRE'

Figure 2.1.2 COMMUNICATIONS PLAN



Key:

- Verbal
- Telephone
- VHF Channel 12
- Fax / e-mail



THE PORT OF GALWAY
MARINE
EMERGENCY PLAN

' GALFIRE '

2.2.1 Media and Interview Guidelines

Always be truthful and when not sure do not speculate or assume. Try and give as much information as possible and avoid using abbreviations, slang or technical terms that may be misunderstood or confusing.

If you are chosen to act as corporate spokesperson, you might wish to consider the following guidelines.

- Your information, whether written or spoken, should be succinct and to the point.
- Keep answers to questions short and simple.
- Stick to facts, avoid conjecture, and be sincere.
- Leave out adjectives. A small incident in the marine industry terms is a major disaster in journalistic ones.
- Consider every word you say as "on the record" and remain on your guard at all times.
- Keep your cool and pause to think before answering difficult questions. Be polite at all times.
- Your face can give you away.
- Limit the time you made available. Hand out a prepared statement.
- Tape yourself whether you are talking to one reporter or 100. A record of what you said may be useful later.
- When you invite questions, ask journalists to give their names and organisation.
- If you do not have an immediate answer, say so, but offer to obtain the information as soon as possible.
- Maps, diagrams, photographs or blackboards are useful tools when trying to explain a complex point and gives you something to refer to occasionally.
- Dress appropriately for the occasion.
- Always observe local safety regulations and insist that news teams do likewise.
- If you are saying something and are interrupted, complete the point you were making before replying.
- If you did not clearly hear a question or cannot understand a question, ask for it to be repeated. Do not answer until you have a clear understanding of what is being asked.
- Rude and aggressive questioners need careful handling. Do not get angry.
- Keep your sense of humour, but if the subject of the news conference is serious, be serious.



THE PORT OF GALWAY
MARINE
EMERGENCY PLAN

' GALFIRE '

2.2.2

Press Release Procedure
Press Holding Statement

Timed at :-hrsday
..... Date

At hrs on day
..... 2001_

....., in his/ her role as
....., was notified of an
incident that occurred at

....., which
resulted in

NEXT PRESS STATEMENT AT HRS

ALL PRESS ENQUIRIES TO "Galway Harbour Office"

TEL : 091 561874



**THE PORT OF GALWAY
MARINE
EMERGENCY PLAN**

' GALFIRE '

3.1 CONTACTS DIRECTORY

Organisation	Telephone		Fax		Out of hours / other method
Galway Harbour Office	091	562329	091	563738	
	091	561874			
	091	564750			
• Harbour Master	091	520034			087 6670044
• Fire Warden's Office	091	567574			087 2581699
• Capt. Ellis (Deputy HM)	091	592662			087 6501803
• Capt. Walsh (Deputy HM)	091	794651			087 6501824
• Mike Swan	091	773926			087 6503887
• Tom Folan	091	760537			087 6506446
• John McGrath	091	520571			087 6503855
• Paddy Turke	091	588451			087 6503411
• Gerry Breheny	091	750200			
Local Authorities					
• Galway County Council (Pollution Officer)	091	509263	091	509033	087 6375771
• Máire ni Chionna (Environmental Officer)	091	509224	091	509033	
•					
Galway City Council (City Engineer/Pollution Officer)	091	536462			087 2239867
•					
Irish Coast Guard					
• Dublin	01	6620922	01	6762666	
	01	6785444	01	6620795	

Pilots Capt. Ellis & Capt. Walsh to be contacted in the event that the Harbour Master is unavailable.



**THE PORT OF GALWAY
MARINE
EMERGENCY PLAN**

' GALFIRE '

3.1 CONTACTS DIRECTORY (Condt.../)

Organisation	Telephone		Fax		Out of hours / other method
• Police			091	538083	999
Supt. Dónal Ó Cualáin	999				086 8281879
• Fire Service	999		091	581994	999
CFO Michael Raftery	091	568984			087 2411213
• Ambulance Service	091	524222	091	528182	999
	091	524434			087 2029499
• Lifeboat RNLi	091	567755	091	567755	999
Galway Lifeboat Station					(Coast Guard Service)
Aran Lifeboat	099	61109			999
• Helicopter Rescue	066	9476109	066	9476962	
	01	4592494			
• Coast & Cliff Rescue	066	9476109	066	9476962	091 572190
• Fareplay Oil Terminal	091	561136	091	561136	086 2364271
(Joe Heffernan)	091	561137			
• Topaz Energy Terminal	091	561251	091	566144	086 2364271
(Joe Heffernan)					
• Cold Chon	091	562885	091	539812	087 2585526
(Liam Henry)					
• Water Authority	091	509224	091	509033	
(Máire ni Cionna)					
• Electricity Supply Board	091	757641			087 2830027
(Gerry Winters)					
• Waste Disposal Company	01	2956611	01	2957173	087 8281360
(Pipe & Drain Services Ltd)					
• Enva Ireland	0502	22411	0502	78699	087 2871597
(Paudie Healy)					



**THE PORT OF GALWAY
MARINE
EMERGENCY PLAN**

' GALFIRE '

CONTACTS DIRECTORY (Contd.../)

Organisation	Telephone		Fax		Out of hours / other method
• EPS Pumps (Tom Ruddy)	022	21064	022	31250	087 2558633
• K.P.H. Pumps	091	751744	091	751104	
• Rynn Engineering Ltd. (Pat Rynn)	091	562568	091	567070	087 252 4060
• Sam Hire (Ray Reilly - Depot Manager)	091	753959	091	753746	086 2565527
• Anchor Safety	091	770735	091	773870	
• Swan Nets Ltd. (Paul Murrin)	073	322554			
• Galway Maritime	091	566568	091	564456	
• Launch Hire - Tarrea Queen (Joe Brady)	091	589125			087 2807028
• Boat Hire (Ciaran Oliver)					087 2807028
• Boat Owners Association (John O'Flaherty)	091	769974			087 6314381
• Department of Defence	01	8379911			
• Department of Agriculture (P J Coyle)	091	565294	091	561558	
• Department of Environment	01	6793377			
• NUI Galway (Marine Dept.)	091	750531	091	564243	
• The Marine Institute	091	773900	091	773908	



**THE PORT OF GALWAY
MARINE
EMERGENCY PLAN**

' GALFIRE '

CONTACTS DIRECTORY (Contd.../)

Organisation	Telephone		Fax		Out of hours / other method
• Department of Marine (Dick McKeever)	091	567530	091	568316	087 2376458
• MTDS (Barry Kavanagh)	091	773980	091	773982	087 9096092
• Maritime Safety Directorate	01	8744900	01	8724491	
• Naval Headquarters	021	4378777	021	4378108	
• Customs / Immigration (John Mungavan)	091	536300			091 523393
• Harbour Master, Rossaveal (Capt. John Donnelly)	091	572108	091	572131	087 2359735
• Galway & Aran Co-op	091	572767	091	572134	091 572161
• Shannon Surveyors	061	413606	061	410262	087 2599775
• Walsh Waste - Garbage	091	771177	091	771244	
• Deep Sea Diving (Noel Higgins)	091	592383			087 6364059
• Galway Plant & Tool Hire	091	755793	091	752499	
	091	753668			
• Civil Defence	093	24002			
• Met Office	01	8064255	01	8064275	



**THE PORT OF GALWAY
MARINE
EMERGENCY PLAN**

' GALFIRE '

3.2 EQUIPMENT RESOURCES

3.2.1 Response Equipment available to Galway Harbour Authority

3.2.1.1 Pollution Response Equipment

Galway Harbour Company		
Item	Description	Quantity
1	Spaghetti Booms BOM 202 (0.2 X 3.0)	56
2	Spaghetti Booms BOM 402 (0.2 X 6.0)	46
3	Oil Spill Roll Mat MAT 401 (0.84 X 46.0)	16
4	Oil Spill Pads MAT 403	5
5	Blue PIG Socks "Barrier Booms Ashore"	13
6	Absorbing Bags "Lite-Dri"	20 (10kgs)
7	Absorbing Bag Skimmers SHM 403	24
8	Absorbing Bag Skimmers SKM 103	12
9	Skimmer Sweep MAT 405	2
10	PIL 203 Small	4 [12 in box]
11	PIL 203 Large	2 [12 in box]
	PLR 242 Drain Blocker	2
	Spagetti PIL 402	16

Topaz Energy Terminal		
Item	Description	Quantity
1	Oil Absorbent Pads	400 pads
2	Mini Boom Package	1
3	Absorbent Granules	26 bags
4	Oil Spill Skirt [boom]	1 x 3 lengths

Fareplay Oil Terminal		
Item	Description	Quantity
1	Absorbent Bags (20kgs)	10 Bags
2	Spill Mats (18' x 18')	50
3	Absorbent Rolls	8



THE PORT OF GALWAY
MARINE
EMERGENCY PLAN

'GALFIRE'

3.2.1.2 Fire fighting Foam

Foam Compound		
Galway Harbour Company	<ul style="list-style-type: none">• 1,000 litres in portable monitor• 1,000 litres in 20 litre drums	2,000 litres 3% concentrate
Fareplay Terminal	<ul style="list-style-type: none">• 5,000 litres in fixed tank• 1,350 litres in 20 litre drums	2,700 litres 3% concentrate Fluro Protein
Topaz Energy	<ul style="list-style-type: none">• 1,350 litres in fixed tank• 600 litres in 20 litre drums	5,600 litres
EnWest Terminal	<ul style="list-style-type: none">• 25,000 litres in IBC's	
Fire Station	<ul style="list-style-type: none">• 900 litres• Fluoroprotein• 900 litres AFFF• 450 litres High Expansion Foam	2250 litres



**THE PORT OF GALWAY
MARINE
EMERGENCY PLAN**

' GALFIRE '

3.2.1.3 Ancillary Equipment

1 Location	Item	Quantity
Harbour Area + Oil Pollution Store Located at rear of Harbour Office	30 tonne Mobile Track Cranes	1
	Forklift Trucks	3
	Front End Loaders	3
	Various Trucks	
	Hoyle Boom	80 metres
	Disposable Oil Boom	240 metres
	3.4 kVa 110-220v Generator	1
	'Jerry can' with fuel for Generator	1
	Extension Cable 110V	1
	Anchors X 25m Rope	3
	Anchors X 15m Rope	3
	Weights X 10m Rope	3
	Eye Protective Goggles	6
	Hard Hats	6
	Disposable Coveralls Large	2
	Disposable Coveralls X- Large	2
	Disposable Coveralls XX- Large	1
	PVC Gloves Long Arm	6
	Rain Gear Large	3
	Rain Gear X-Large	3
	Torches	4
	Floodlights	2
	Coil of 12mm Rope	1
	'DF2' 5 Litre Containers	6
	Drums for Mixing 'DF2'	6
	Watering Cans	2
	Barrier Tape (Red/White)	2
	Barrier Tape (Yellow/Black)	2
	Traffic Cones	6
	Sampling Canisters	4
	Portable First Aid Kits	3
	Micro Vent Resuscitator	1



**THE PORT OF GALWAY
MARINE
EMERGENCY PLAN**

' GALFIRE '

Ancillary Equipment (contd.../)

2 Location	Item	Quantity
Galway County Council Yard	Front End Loaders	
	Cone barriers Life Jackets Flares Sand Bags Vans	
	<i>Miscellaneous Items</i>	
	Traffic Control Signs & Equipment Pyrasorb (Bags) Absorbent Pads 0.6X0.6m Absorbent Rolls 0.6X50m Absorbent Rolls 1.0X20m Spaghetti Booms Fimsoor	50 15 X 200 pack 3 2 6 pack of 4
Galway City Council Yard	Truck with emergency supplies ready for use in the event of an emergency Pick Up Trucks Vans Traffic Control Equipment Chain & Concrete Saws Water Pumps Miscellaneous Equipment	
Galway Fire Brigade	Positive Pressure BA Sets	14
	Gastight Chemical Suits Chemical Protection Suits Buoyancy Aids Resuscitators First Aid Kits 2.2 Kw Generator Handheld Portable two-way Radios	10 5 12
Galway Plant and Tool Hire	Various items of electrical and diesel driven machines and tools	



THE PORT OF GALWAY
MARINE
EMERGENCY PLAN

' GALFIRE '

Ancillary Equipment (contd../)

3 Location	Item	Quantity
K.P.H. Pumps	Submersible electric pumps	
	Diesel operated centrifugal pumps	
	Handheld Portable two-way Radios	12
Pat Ryan Engineering	Oxy/Acetylene burning gear Power and hand tools Chain blocks and lifting equipment	
Sam Hire	Various pumps, generators, angle grinders, drills, fencing, traffic cones,	
Anchor Safety	Safety boots, harness, hard hats, gloves, goggles, coveralls etc.	
Galway Maritime	Lifejackets and buoyancy aids Rope Wire Shackles Buoys Markers	



THE PORT OF GALWAY
MARINE
EMERGENCY PLAN

' GALFIRE '

APPENDIX A

- Map of Galway Harbour.
- Map of Claddagh Quays.
- Admiralty Chart of Galway Harbour (BA 1984).
- Admiralty Chart of Galway Bay (BA 2173).
- Drawing of Embarkation Area at Lay By Berth.

Embarkation muster area where rescue personnel and their equipment can be taken afloat.

The drawing of the docks clearly showing the embarkation area at the steps at the lay by berth.



THE PORT OF GALWAY
MARINE
EMERGENCY PLAN

' GALFIRE '

APPENDIX B

List of available craft:

Galway City Inshore Lifeboat:	Secretary 567707 087 2418970	L.B.Station 567755
Aran Islands Lifeboat:		099-61156
Loc Lurgain 11	Pilot vessel	561874 or VHF
*Rose of Aran	Ferry	567676 or VHF
*Tranquillity	Ferry	567676 or VHF
Happy Hooker	Ferry	567676 or VHF
Aran Flyer	Ferry	572050 or VHF
Aran Express	Ferry	572050 or VHF
Aran Seabird	Ferry	572050 or VHF
Island Discovery	Ferry	572050 or VHF
Galway Bay Sailing Club	12 man semi rigid inflatable with twin outboard engine	

*Available at
Doolin/Aran



THE PORT OF GALWAY
MARINE
EMERGENCY PLAN

' GALFIRE '

APPENDIX C

Casualty landing sites (including helicopter landing areas)

Lay-by at Galway Docks: Access at all stages of tide.

Galway Docks: Access limited to periods when dock gates are open (i.e. - 2½ hrs before HW until HW)

Slipway at Blackrock, Salthill.

Slipway at Palmers Rock, Salthill.

Slipway at Claddagh.

Slipway at Renville, Oranmore, Co. Galway.

Helicopter landing site at Renmore Barracks, Galway.

Helicopter landing site at University College Hospital, Galway.

Helicopter landing site at Carnmore Airport, Galway.

Helicopter landing site at Centre pier, Galway Docks.

Helicopter landing site at Harbour Enterprise Park.



THE PORT OF GALWAY
MARINE
EMERGENCY PLAN

' GALFIRE '

Appendix D

Communication Channels

Harbour Office: Marine VHF Radio Station - all channels

Pilot Boat: Marine VHF Radio Station - all channels

4 Portable Hand Held VHF Radios - Channels 06, 08, 09, 10, 11, 12, 14, 16, 24, 28, 70, 74.

1 Base Station in Fire Station - all channels VHF Radio

3 Domestic Telephone lines in Harbour Office:
(091) 562329/561874/564750

1 Domestic Telephone Line in Fire Warden's Hut: (091) 567574

1 Direct Telephone Line from Fire Warden's Hut to Fire Station.

Galway Harbour Office Fax: (091) 563738

www.galwayharbour.com

info@galwayharbour.com