

## RENMORE OPTION

### DEVELOPMENT AREAS

#### IMPACT ON SAC

Total development within SAC = 80.75 ha  
 Total Intertidal Area Impacted = 6.82 ha  
 Add. Existing Docks Channel Maintenance = 1.31 ha

#### YARDS/QUAYS/LANDSCAPING AREAS

Commercial Port Yard Areas	9.73 ha
Commercial Quay Areas (incl wave walls)	2.00 ha
Harbour Company Warehouse Yards	1.53 ha
Marina Boat Yard, Quay and Village Area	1.83 ha
Fishing Pier and Yard Area	0.55 ha
Landscaping and Nautical Amenity Areas	6.26 ha

**Subtotal** **21.90 ha**

#### ASSOCIATED ACCESS AREAS (ROADS / RAIL / MARINE)

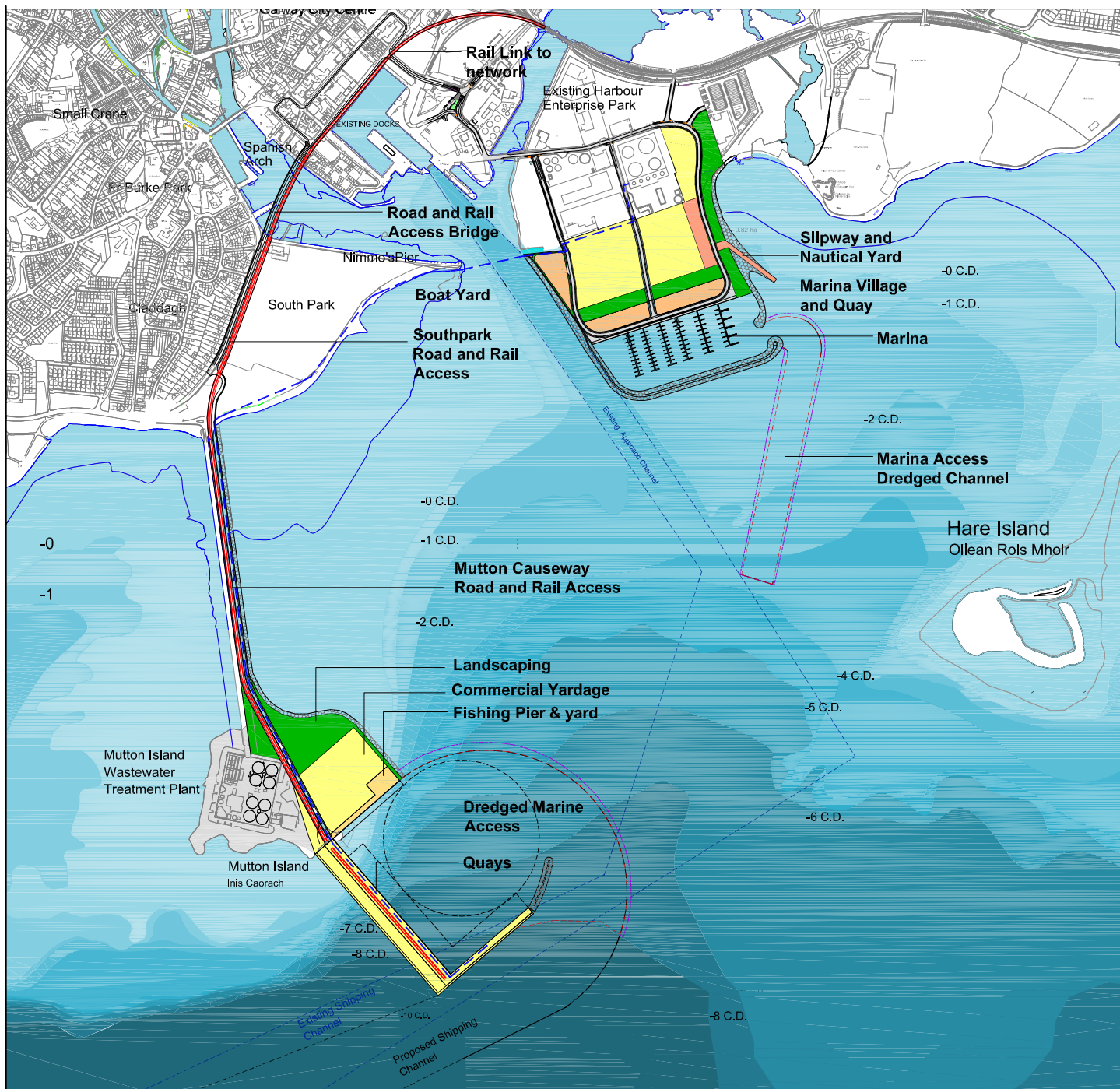
Roads and Rail Access - GHEP	6.17 ha
Dredged Area	46.48 ha
Marine construction working area	5.30 ha
Breakwaters and Revetment area	3.04 ha

**Subtotal** **60.99 ha**

**TOTAL DEVELOPMENT AREA** **82.89 ha**

**TOTAL MAINTENANCE DREDGING AREA** **47.69 ha**





## MUTTON ISLAND ALTERNATIVE

### No. 1

## Deep Berths at Mutton Access via Claddagh

### DEVELOPMENT AREAS

#### IMPACT ON SAC

Total development within SAC	= 78.08 ha
Total Intertidal Area Impacted	= 17.51 ha
Add. Existing Docks Channel Maintenance	= 8.70 ha

#### YARDS/QUAYS/LANDSCAPING AREAS

Commercial Port Yard Areas	9.73 ha
Commercial Quay Areas (incl wave walls)	2.00 ha
Harbour Company Warehouse Yards	1.53 ha
Marina Boat Yard, Quay and Village Area	1.83 ha
Fishing Pier and Yard Area	0.55 ha
Landscaping and Nautical Amenity Areas	6.26 ha

**Subtotal** 21.90 ha

#### ASSOCIATED ACCESS AREAS (ROADS / RAIL / MARINE)

Roads and Rail Access - GHEP	3.16 ha
Roads and Rail Access to Mutton Island Location	5.14 ha
Commercial Port Dredged Area	28.26 ha
Marina and Existing docks Dredged Area	13.21 ha
Breakwaters and Revetment area	4.17 ha
Marine Construction Working Area	4.56 ha
Fuel Lines construction area (independent)	0.28 ha

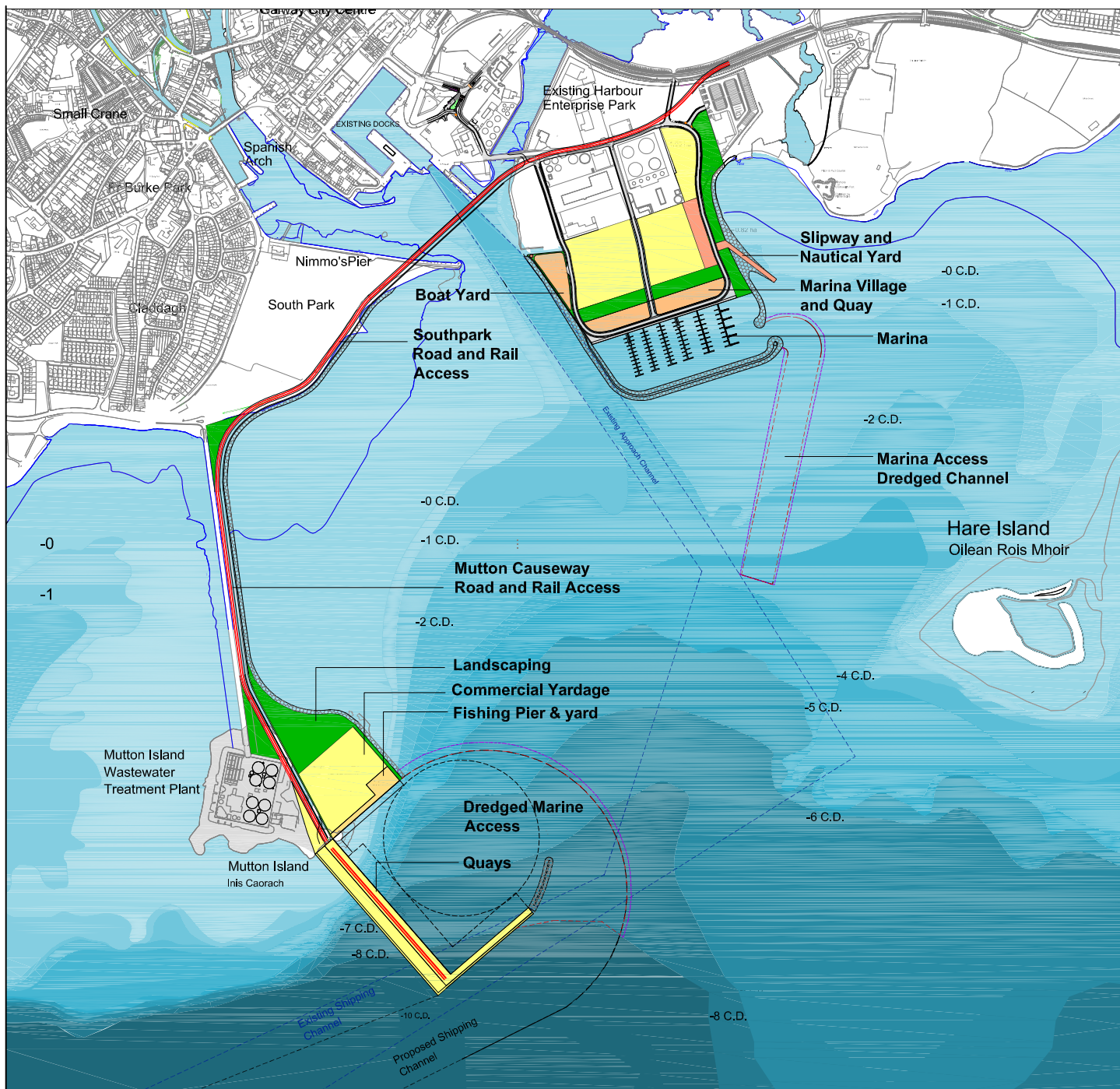
**Subtotal** 58.78 ha

**TOTAL DEVELOPMENT AREA** 80.68 ha

**TOTAL MAINTENANCE DREDGING AREA** 50.17 ha







## MUTTON ISLAND ALTERNATIVE

### No. 2

### Deep Berths at Mutton Access via Nimmo's Pier

#### DEVELOPMENT AREAS

#### IMPACT ON SAC

Total development within SAC	= 79.92 ha
Total Intertidal Area Impacted	= 20.14 ha
Add. Existing Docks Channel Maintenance	= 8.70 ha

#### YARDS/QUAYS/LANDSCAPING AREAS

Commercial Port Yard Areas	9.73 ha
Commercial Quay Areas (incl wave walls)	2.00 ha
Harbour Company Warehouse Yards	1.53 ha
Marina Boat Yard, Quay and Village Area	1.83 ha
Fishing Pier and Yard Area	0.55 ha
Landscaping and Nautical Amenity Areas	6.26 ha

**Subtotal** **21.90 ha**

#### ASSOCIATED ACCESS AREAS (ROADS / RAIL / MARINE)

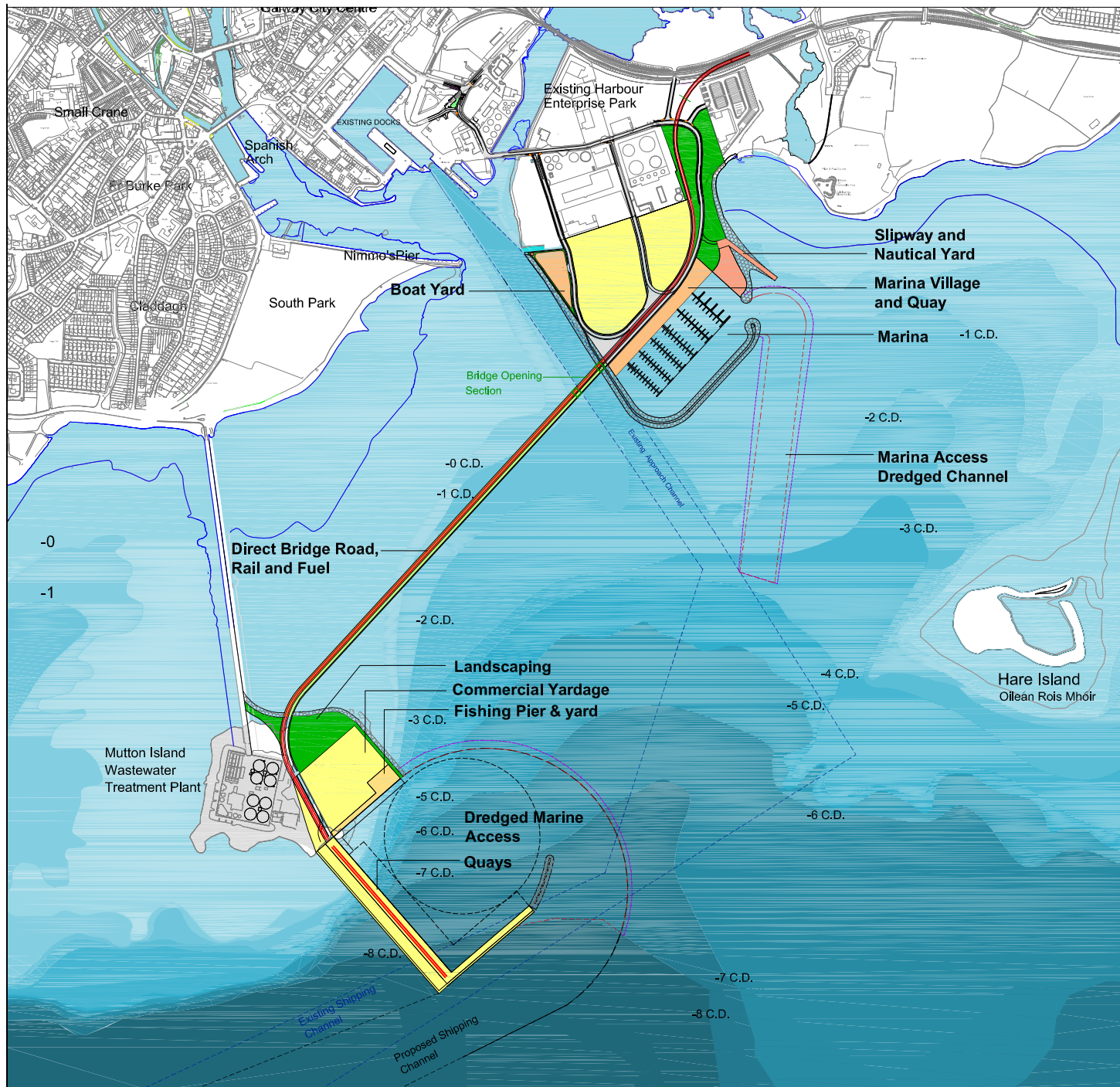
Roads and Rail - GHEP	3.90 ha
Roads and Rail Access to Mutton Island Location	4.90 ha
Commercial Port Dredged Area	28.26 ha
Marina and Existing docks Dredged Area	13.21 ha
Breakwaters and Revetment area	4.65 ha
Marine Construction Working Area	5.20 ha

**Subtotal** **60.12 ha**

**TOTAL DEVELOPMENT AREA** **82.02 ha**

**TOTAL MAINTENANCE DREDGING AREA** **50.17 ha**





## MUTTON ISLAND ALTERNATIVE

### **No. 3**

### Deep Berths at Mutton - Access via Long Low Bridge (1230m) with opening section

#### DEVELOPMENT AREAS

#### IMPACT ON SAC

Total development within SAC	= 78.28 ha
Total Intertidal Area Impacted	= 15.91 ha
Add. Existing Docks Channel Maintenance	= 8.70 ha

#### YARDS/QUAYS/LANDSCAPING AREAS

Commercial Port Yard Areas	9.73 ha
Commercial Quay Areas (incl wave walls)	2.00 ha
Harbour Company Warehouse Yards	1.53 ha
Marina Boat Yard, Quay and Village Area	1.83 ha
Fishing Pier and Yard Area	0.55 ha
Landscaping and Nautical Amenity Areas	6.26 ha

**Subtotal** **21.90 ha**

#### ASSOCIATED ACCESS AREAS (ROADS / RAIL / MARINE)

Roads and Rail Access - GHEP	3.86 ha
Roads and Rail Access to Mutton Island Location	3.44 ha
Commercial Port Dredged Area	28.26 ha
Marina and Existing Docks Dredged Access	14.88 ha
Marine Construction Working Area	3.79 ha
Breakwaters and Revetment area	3.35 ha

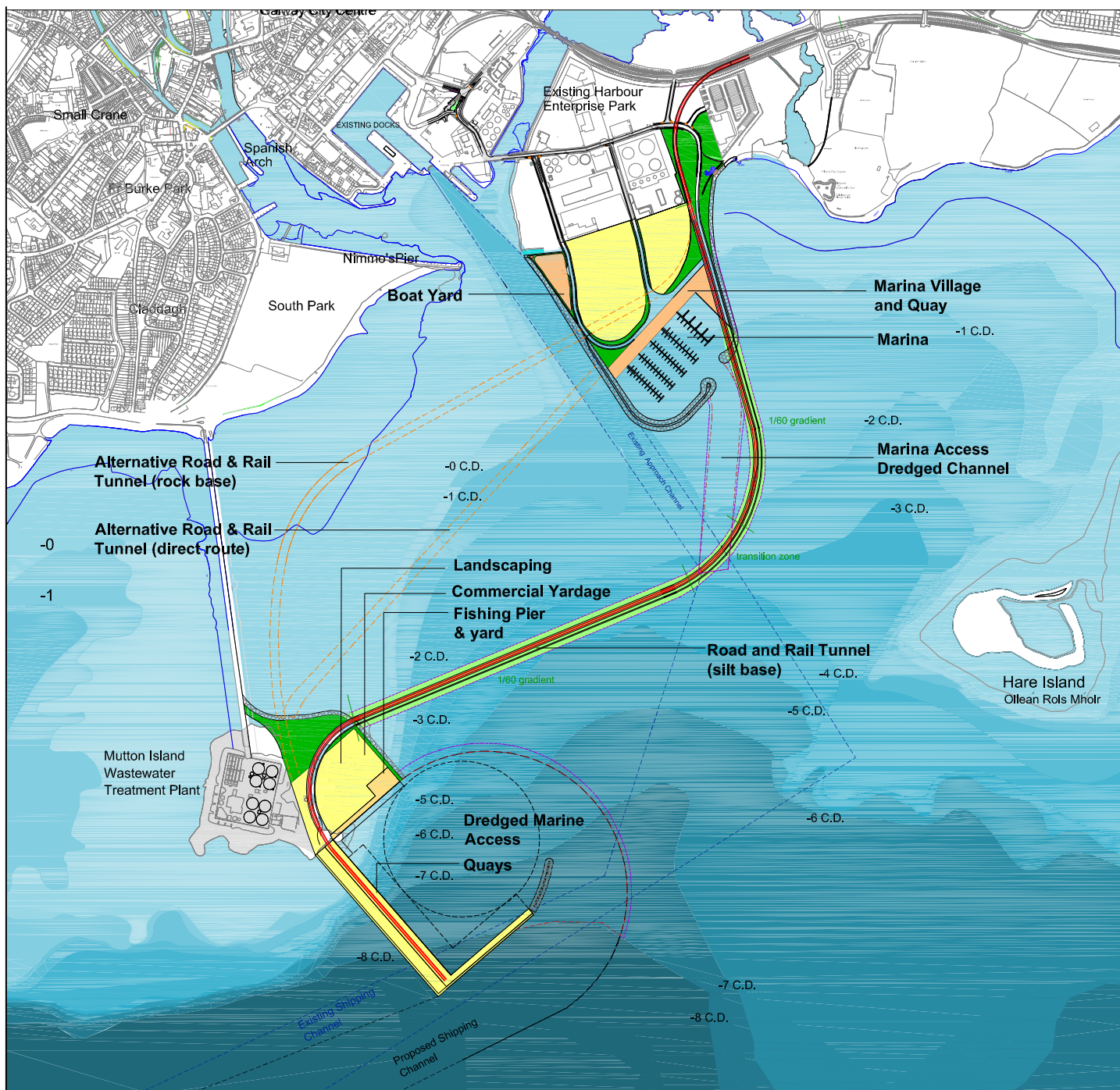
**Subtotal** **57.58 ha**

**TOTAL DEVELOPMENT AREA** **79.48 ha**

**TOTAL MAINTENANCE DREDGING AREA** **51.84 ha**







## MUTTON ISLAND ALTERNATIVE

### No. 4

### Deep Berths at Mutton Access via Seaward Tunnel

#### DEVELOPMENT AREAS

#### IMPACT ON SAC

Total development within SAC	= 74.98 ha
Total Intertidal Area Impacted	= 15.12 ha
Add. Existing Docks Channel Maintenance	= 8.70 ha

#### YARDS/QUAYS/LANDSCAPING AREAS

Commercial Port Yard Areas	9.73 ha
Commercial Quay Areas (incl wave walls)	2.00 ha
Harbour Company Warehouse Yards	1.53 ha
Marina Boat Yard, Quay and Village Area	1.83 ha
Fishing Pier and Yard Area	0.55 ha
Landscaping and Nautical Amenity Areas	6.26 ha

**Subtotal** 21.90 ha

#### ASSOCIATED ACCESS AREAS (ROADS / RAIL / MARINE)

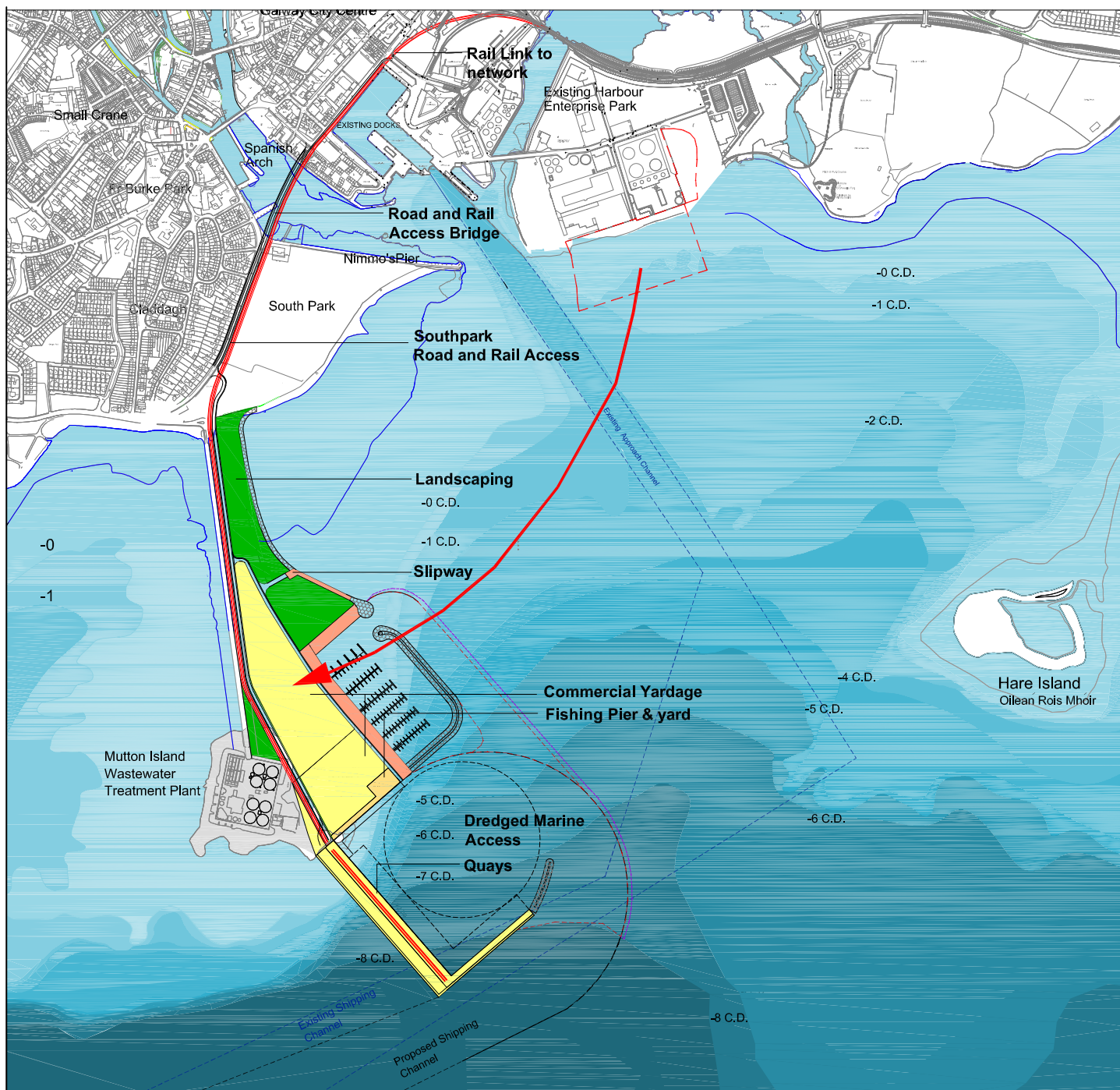
Roads and Rail Access - GHEP	3.70 ha
Roads and Rail Access to Mutton Island Location	8.30 ha
Commercial Port Dredged Area	28.26 ha
Marina and Existing Docks Dredged Access	9.36 ha
Marine Construction Working Area	3.55 ha
Breakwaters and Revetment area	3.06 ha

**Subtotal** 56.23 ha

**TOTAL DEVELOPMENT AREA** 78.13 ha

**TOTAL MAINTENANCE DREDGING AREA** 46.32 ha





## MUTTON ISLAND ALTERNATIVE

### No. 5

## All of New Development at Mutton Access via Claddagh

### DEVELOPMENT AREAS

#### IMPACT ON SAC

Total development within SAC	= 70.47 ha
Total Intertidal Area Impacted	= 27.71 ha
Add. Existing Docks Channel Maintenance	= 8.70 ha

#### YARDS/QUAYS/LANDSCAPING AREAS

Commercial Port Yard Areas	9.73 ha
Commercial Quay Areas (incl wave walls)	2.00 ha
Harbour Company Warehouse Yards	1.53 ha
Marina Boat Yard, Quay and Village Area	1.83 ha
Fishing Pier and Yard Area	0.55 ha
Landscaping and Nautical Amenity Areas	6.26 ha

**Subtotal** 21.90 ha

#### ASSOCIATED ACCESS AREAS (ROADS / RAIL / MARINE)

Roads and Rail Access - GHEP	- ha
Roads and Rail Access to Mutton Island Location	5.48 ha
Commercial Port Dredged Area	28.26 ha
Marina and Existing Docks Dredged Access	12.82 ha
Marine Construction Working Area	1.58 ha
Breakwaters and Revetment area	2.46 ha

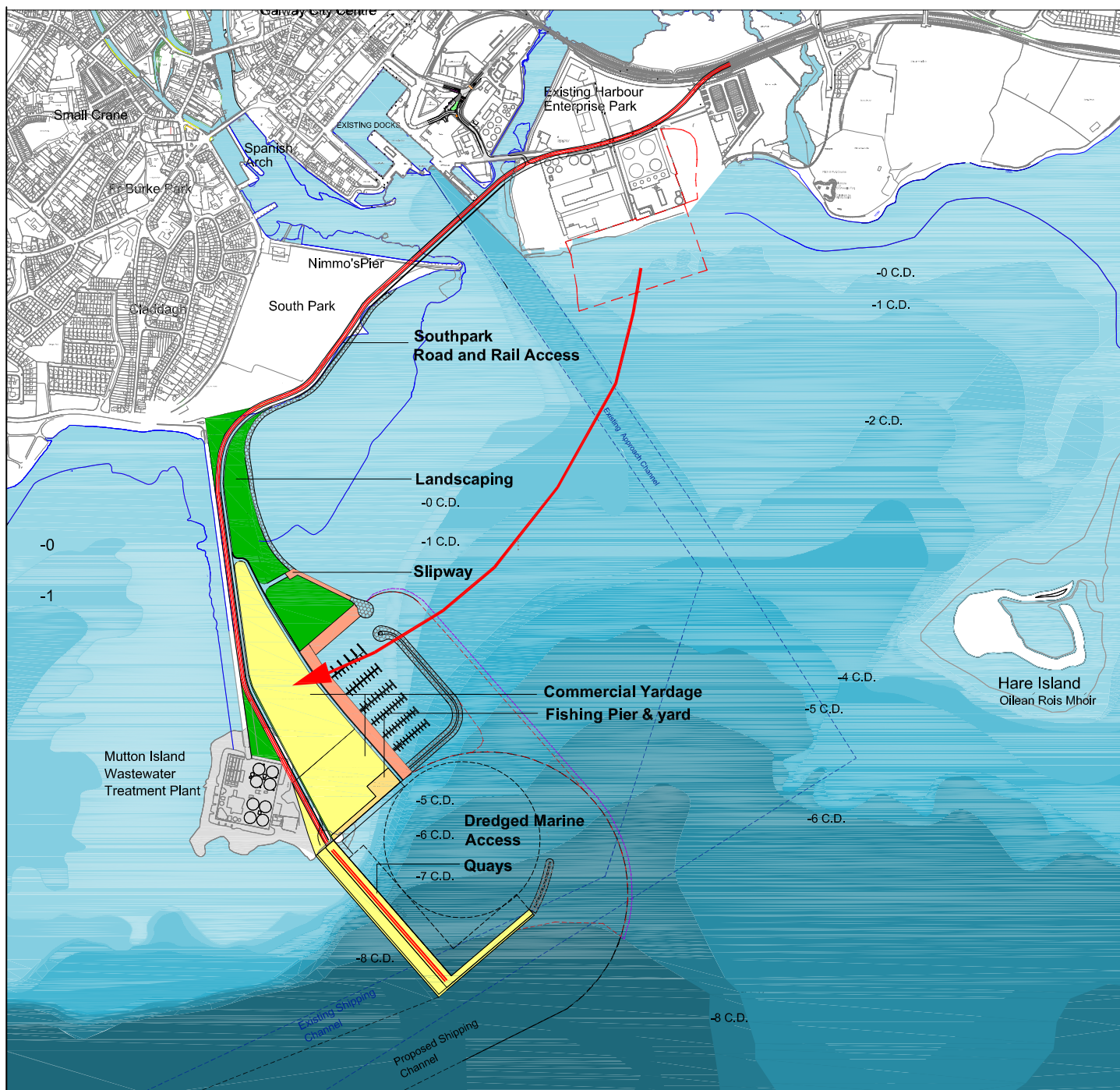
**Subtotal** 50.60 ha

**TOTAL DEVELOPMENT AREA** 72.50 ha

**TOTAL MAINTENANCE DREDGING AREA** 49.78 ha







## MUTTON ISLAND ALTERNATIVE

### **No. 6**

### All of New Development at Mutton Access via Nimmo's Pier

#### DEVELOPMENT AREAS

##### IMPACT ON SAC

Total development within SAC	= 72.71 ha
Total Intertidal Area Impacted	= 30.08 ha
Add. Existing Docks Channel Maintenance	= 8.70 ha

##### YARDS/QUAYS/LANDSCAPING AREAS

Commercial Port Yard Areas	9.73 ha
Commercial Quay Areas (incl wave walls)	2.00 ha
Harbour Company Warehouse Yards	1.53 ha
Marina Boat Yard, Quay and Village Area	1.83 ha
Fishing Pier and Yard Area	0.55 ha
Landscaping and Nautical Amenity Areas	6.26 ha

**Subtotal** 21.90 ha

##### ASSOCIATED ACCESS AREAS (ROADS / RAIL / MARINE)

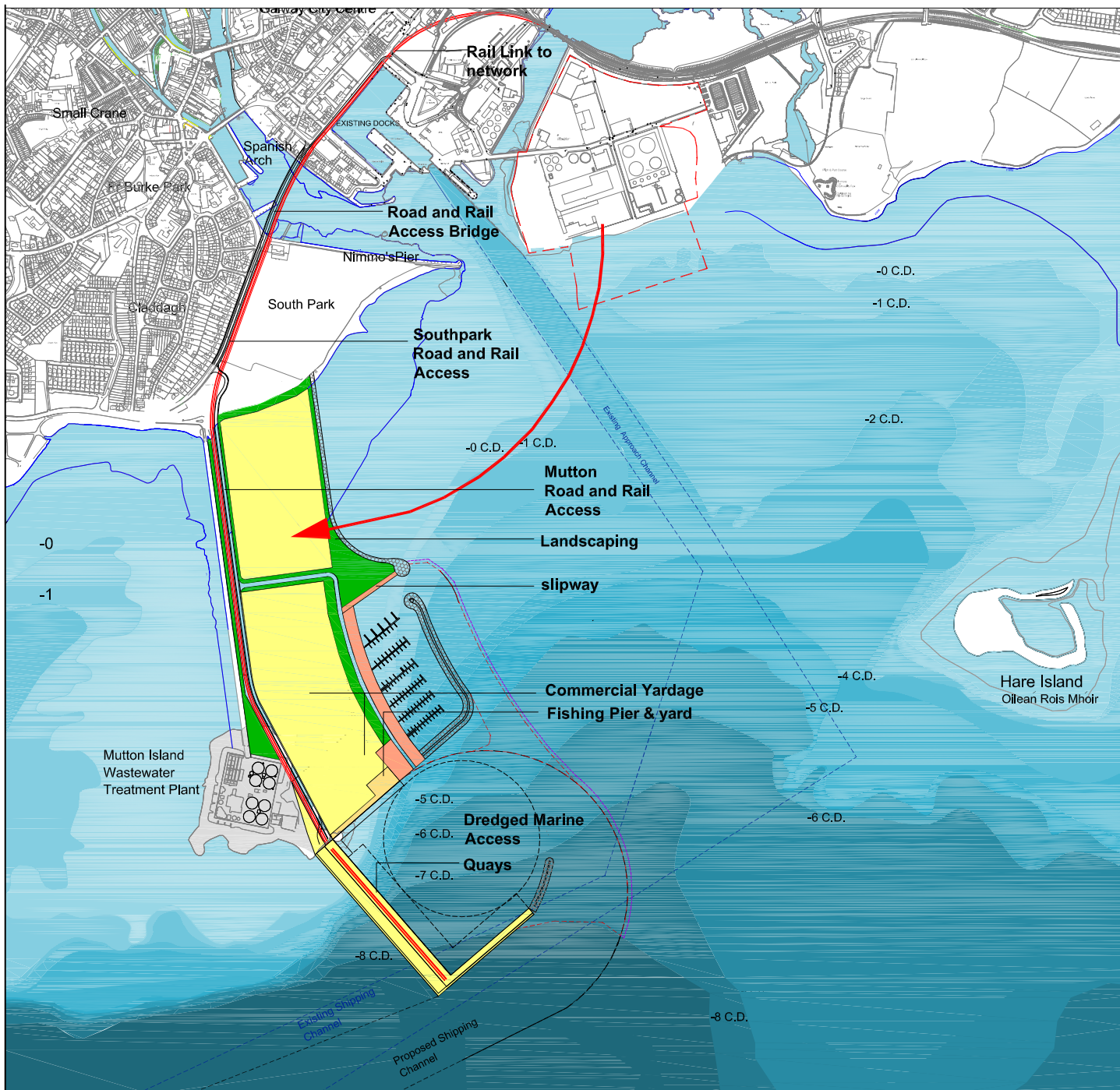
Roads and Rail - GHEP	1.29 ha
Roads and Rail Access to Mutton Island Location	4.90 ha
Commercial Port Dredged Area	28.26 ha
Marina and Existing Docks Dredged Access	12.82 ha
Marine Construction Working Area	2.25 ha
Breakwaters and Revetment area	2.94 ha

**Subtotal** 52.46 ha

**TOTAL DEVELOPMENT AREA** 74.36 ha

**TOTAL MAINTENANCE DREDGING AREA** 49.78 ha





## MUTTON ISLAND ALTERNATIVE

### No. 9

### All of New Development and Relocated GHEP at Mutton Access via Claddagh

#### DEVELOPMENT AREAS

#### IMPACT ON SAC

Total development within SAC	= 83.30 ha
Total Intertidal Area Impacted	= 37.76 ha
Add. Existing Docks Channel Maintenance	= 8.70 ha

#### YARDS/QUAYS/LANDSCAPING AREAS

Commercial Port Yard Areas	9.73 ha
Commercial Quay Areas (incl wave walls)	2.00 ha
Harbour Company Warehouse Yards	1.53 ha
Marina Boat Yard, Quay and Village Area	1.83 ha
Fishing Pier and Yard Area	0.55 ha
Landscaping and Nautical Amenity Areas	6.26 ha
Relocation of Existing GHEP Yards	13.05 ha

**Subtotal** 34.95 ha

#### ASSOCIATED ACCESS AREAS (ROADS / RAIL / MARINE)

Roads and Rail Access - GHEP	- ha
Roads and Rail Access to Mutton Island Location	5.14 ha
Commercial Port Dredged Area	28.26 ha
Marina and Existing Docks Dredged Access	11.86 ha
Marine Construction Working Area	1.58 ha
Breakwaters and Revetment area	2.36 ha

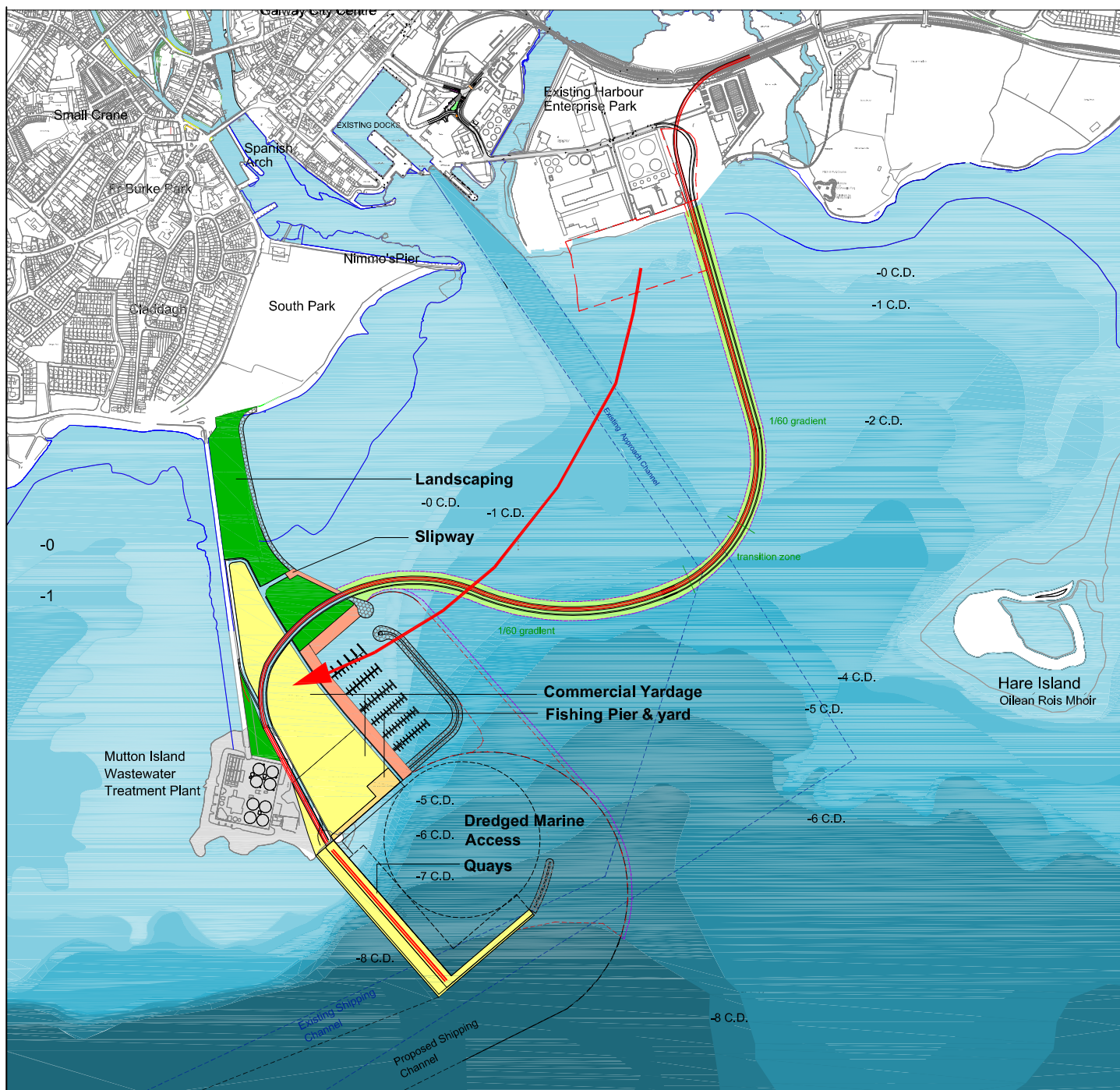
**Subtotal** 49.20 ha

**TOTAL DEVELOPMENT AREA** 84.15 ha

**TOTAL MAINTENANCE DREDGING AREA** 48.82 ha







## MUTTON ISLAND ALTERNATIVE

### No. 8

### All of New Development at Mutton Access via Tunnel

#### DEVELOPMENT AREAS

#### IMPACT ON SAC

Total development within SAC = 79.29 ha  
 Total Intertidal Area Impacted = 28.86 ha  
 Add. Existing Docks Channel Maintenance = 8.70 ha

#### YARDS/QUAYS/LANDSCAPING AREAS

Commercial Port Yard Areas	9.73 ha
Commercial Quay Areas (incl wave walls)	2.00 ha
Harbour Company Warehouse Yards	1.53 ha
Marina Boat Yard, Quay and Village Area	1.83 ha
Fishing Pier and Yard Area	0.55 ha
Landscaping and Nautical Amenity Areas	6.26 ha

**Subtotal** 21.90 ha

#### ASSOCIATED ACCESS AREAS (ROADS / RAIL / MARINE)

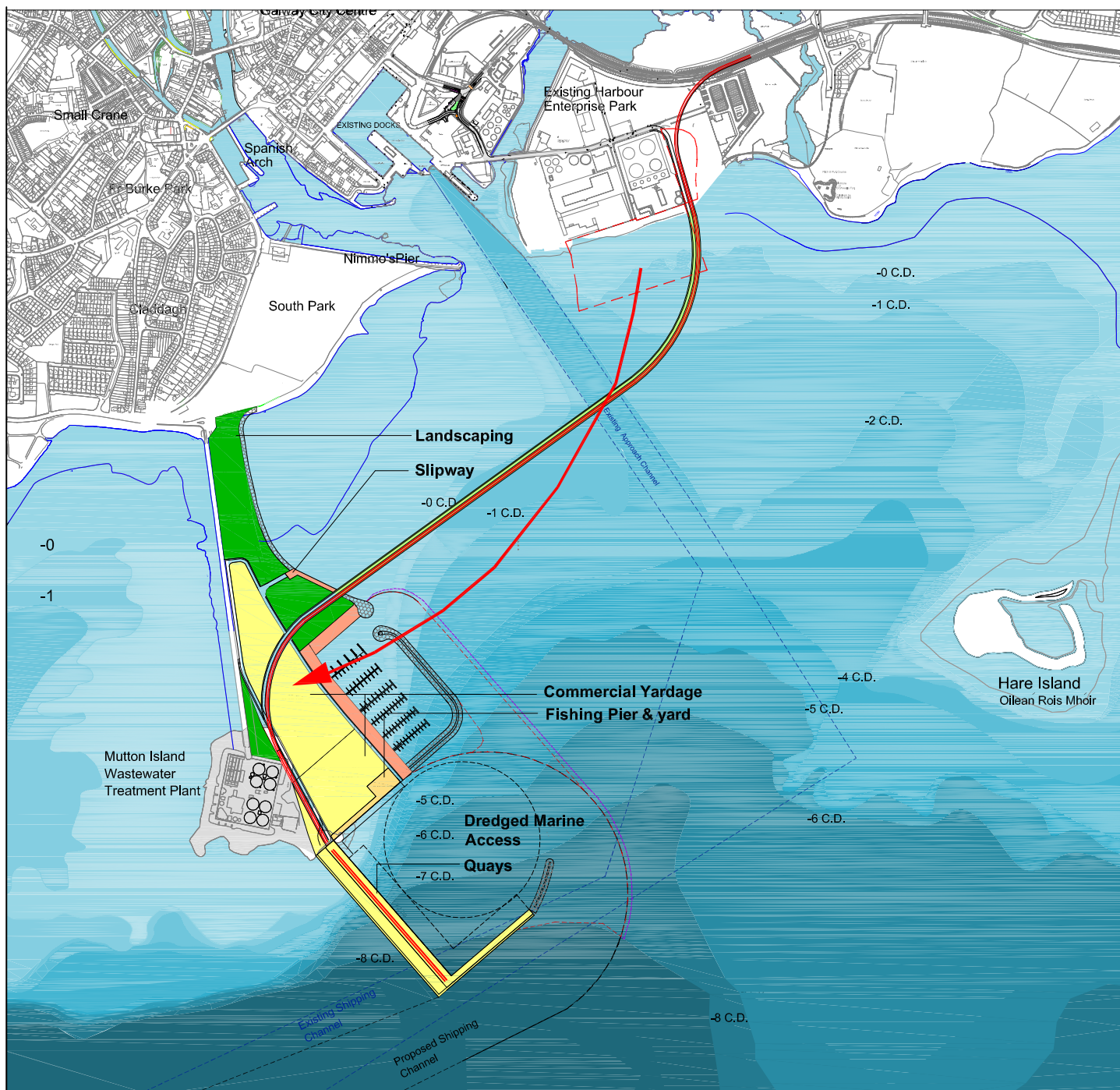
Roads and Rail Access - GHEP	1.90 ha
Roads and Rail Access to Mutton Island Location	12.32 ha
Commercial Port Dredged Area	28.26 ha
Marina and Existing Docks Dredged Access	12.82 ha
Marine Construction Working Area	1.58 ha
Breakwaters and Revetment area	2.46 ha

**Subtotal** 59.34 ha

**TOTAL DEVELOPMENT AREA** 81.24 ha

**TOTAL MAINTENANCE DREDGING AREA** 49.78 ha





## MUTTON ISLAND ALTERNATIVE

### No. 7

**All of New Development at Mutton  
Access via Longer  
Low Bridge (1430m)**

#### DEVELOPMENT AREAS

##### IMPACT ON SAC

Total development within SAC = 74.21 ha  
Total Intertidal Area Impacted = 28.53 ha  
Add. Existing Docks Channel Maintenance = 8.70 ha

##### YARDS/QUAYS/LANDSCAPING AREAS

Commercial Port Yard Areas	9.73 ha
Commercial Quay Areas (incl wave walls)	2.00 ha
Harbour Company Warehouse Yards	1.53 ha
Marina Boat Yard, Quay and Village Area	1.83 ha
Fishing Pier and Yard Area	0.55 ha
Landscaping and Nautical Amenity Areas	6.26 ha

**Subtotal 21.90 ha**

##### ASSOCIATED ACCESS AREAS (ROADS / RAIL / MARINE)

Roads and Rail Access - GHEP	1.90 ha
Roads and Rail Access to Mutton Island Location	7.30 ha
Commercial Port Dredged Area	28.26 ha
Marina and Existing Docks Dredged Access	12.82 ha
Marine Construction Working Area	1.58 ha
Breakwaters and Revetment area	2.46 ha

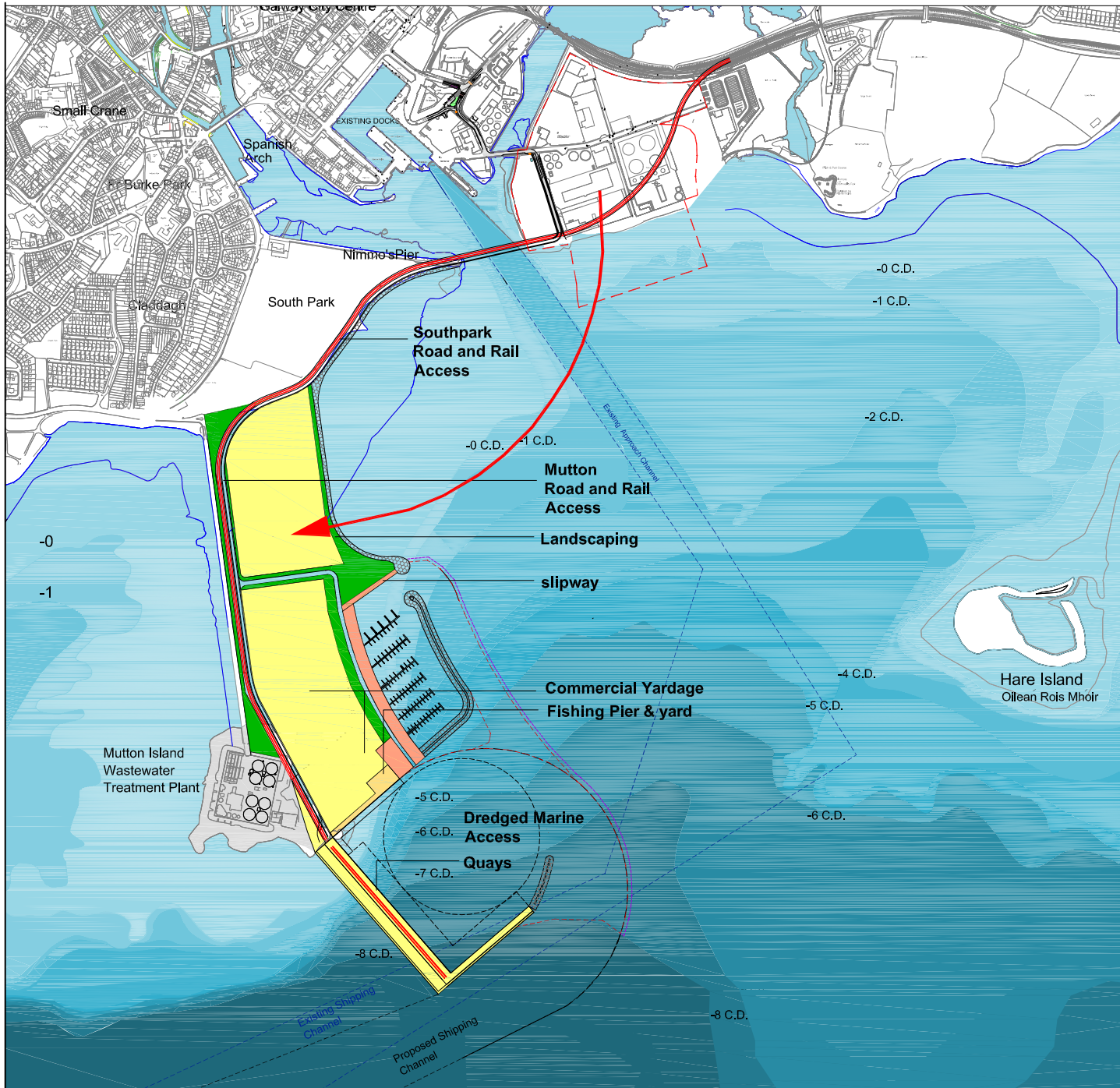
**Subtotal 54.32 ha**

**TOTAL DEVELOPMENT AREA 76.22 ha**

**TOTAL MAINTENANCE DREDGING AREA 49.78 ha**







## MUTTON ISLAND ALTERNATIVE

**No. 10**

**All of New Development and Relocated GHEP at Mutton Access via Nimmo's Pier**

### DEVELOPMENT AREAS

#### IMPACT ON SAC

Total development within SAC = 85.33 ha  
 Total Intertidal Area Impacted = 38.53 ha  
 Add. Existing Docks Channel Maintenance = 8.70 ha

#### YARDS/QUAYS/LANDSCAPING AREAS

Commercial Port Yard Areas	9.73 ha
Commercial Quay Areas (incl wave walls)	2.00 ha
Harbour Company Warehouse Yards	1.53 ha
Marina Boat Yard, Quay and Village Area	1.83 ha
Fishing Pier and Yard Area	0.55 ha
Landscaping and Nautical Amenity Areas	6.26 ha
Relocation of Existing GHEP Yards	13.05 ha

**Subtotal 34.95 ha**

#### ASSOCIATED ACCESS AREAS (ROADS / RAIL / MARINE)

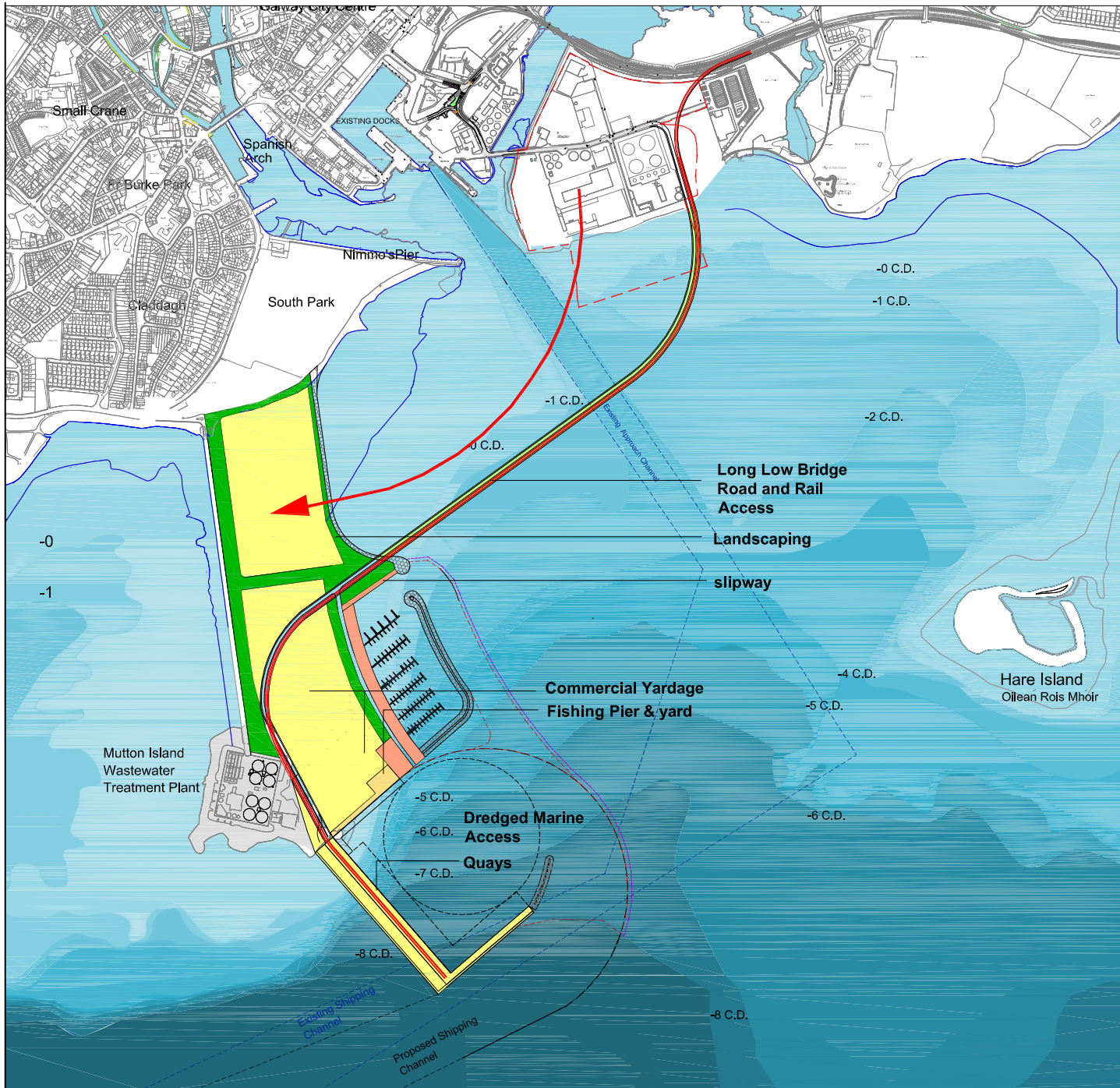
Roads and Rail Access - GHEP	1.46 ha
Roads and Rail Access to Mutton Island Location	4.75 ha
Commercial Port Dredged Area	28.26 ha
Marina and Existing Docks Dredged Access	11.86 ha
Marine Construction Working Area	2.08 ha
Breakwaters and Revetment area	2.82 ha

**Subtotal 51.23 ha**

**TOTAL DEVELOPMENT AREA 86.18 ha**

**TOTAL MAINTENANCE DREDGING AREA 48.82 ha**





## MUTTON ISLAND ALTERNATIVE

### No. 11

**All of New Development and Relocated GHEP at Mutton Access via Long Low Bridge**

#### DEVELOPMENT AREAS

##### IMPACT ON SAC

Total development within SAC = 84.44 ha  
 Total Intertidal Area Impacted = 38.33 ha  
 Add. Existing Docks Channel Maintenance = 8.70 ha

##### YARDS/QUAYS/LANDSCAPING AREAS

Commercial Port Yard Areas	9.73 ha
Commercial Quay Areas (incl wave walls)	2.00 ha
Harbour Company Warehouse Yards	1.53 ha
Marina Boat Yard, Quay and Village Area	1.83 ha
Fishing Pier and Yard Area	0.55 ha
Landscaping and Nautical Amenity Areas	6.26 ha
Relocation of Existing GHEP Yards	13.05 ha

**Subtotal 34.95 ha**

##### ASSOCIATED ACCESS AREAS (ROADS / RAIL / MARINE)

Roads and Rail Access - GHEP	1.86 ha
Roads and Rail Access to Mutton Island Location	5.35 ha
Commercial Port Dredged Area	28.26 ha
Marina and Existing Docks Dredged Access	11.86 ha
Marine Construction Working Area	2.08 ha
Breakwaters and Revetment area	2.36 ha

**Subtotal 51.77 ha**

**TOTAL DEVELOPMENT AREA 86.72 ha**

**TOTAL MAINTENANCE DREDGING AREA 48.82 ha**

