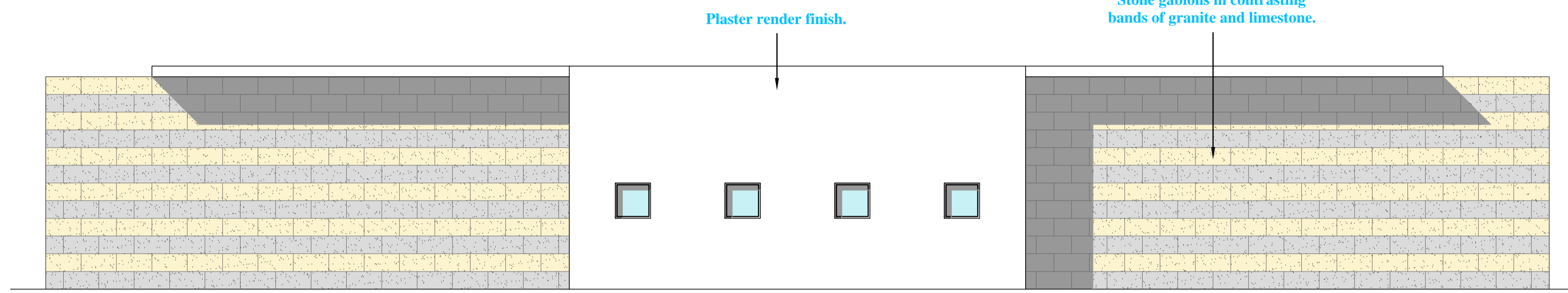


FRONT ELEVATION - 1 : 100

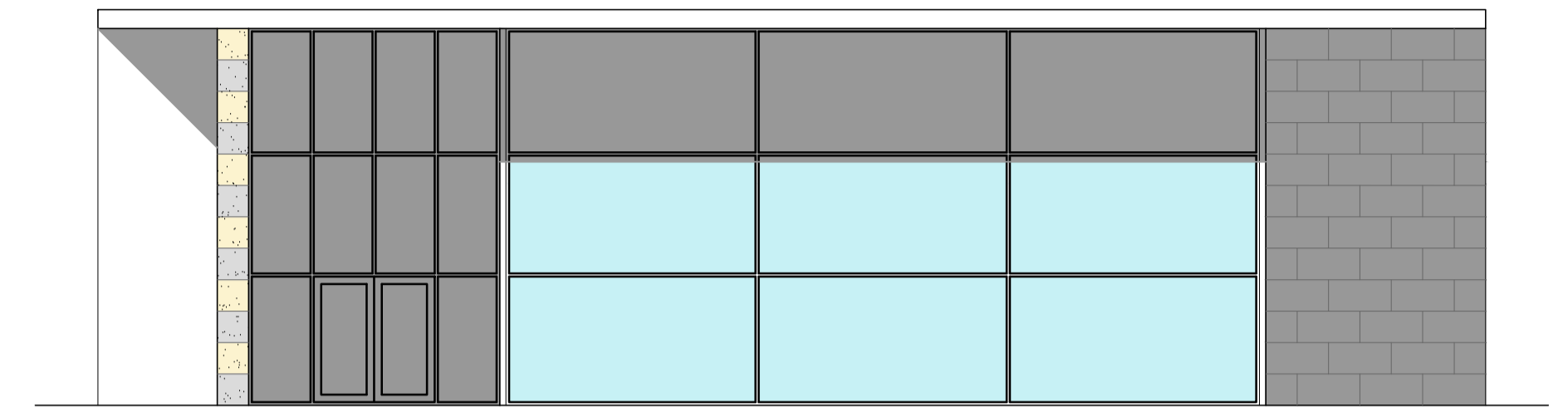
Triple glazed aluminium curtain walling with black powder coated finish.



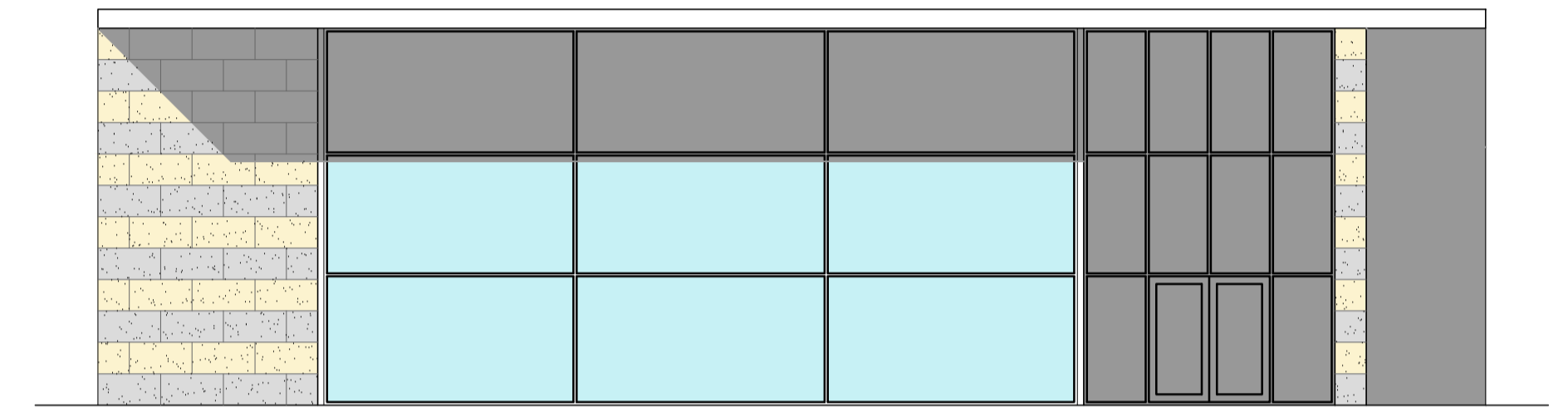
REAR ELEVATION - 1 : 100

Plaster render finish.

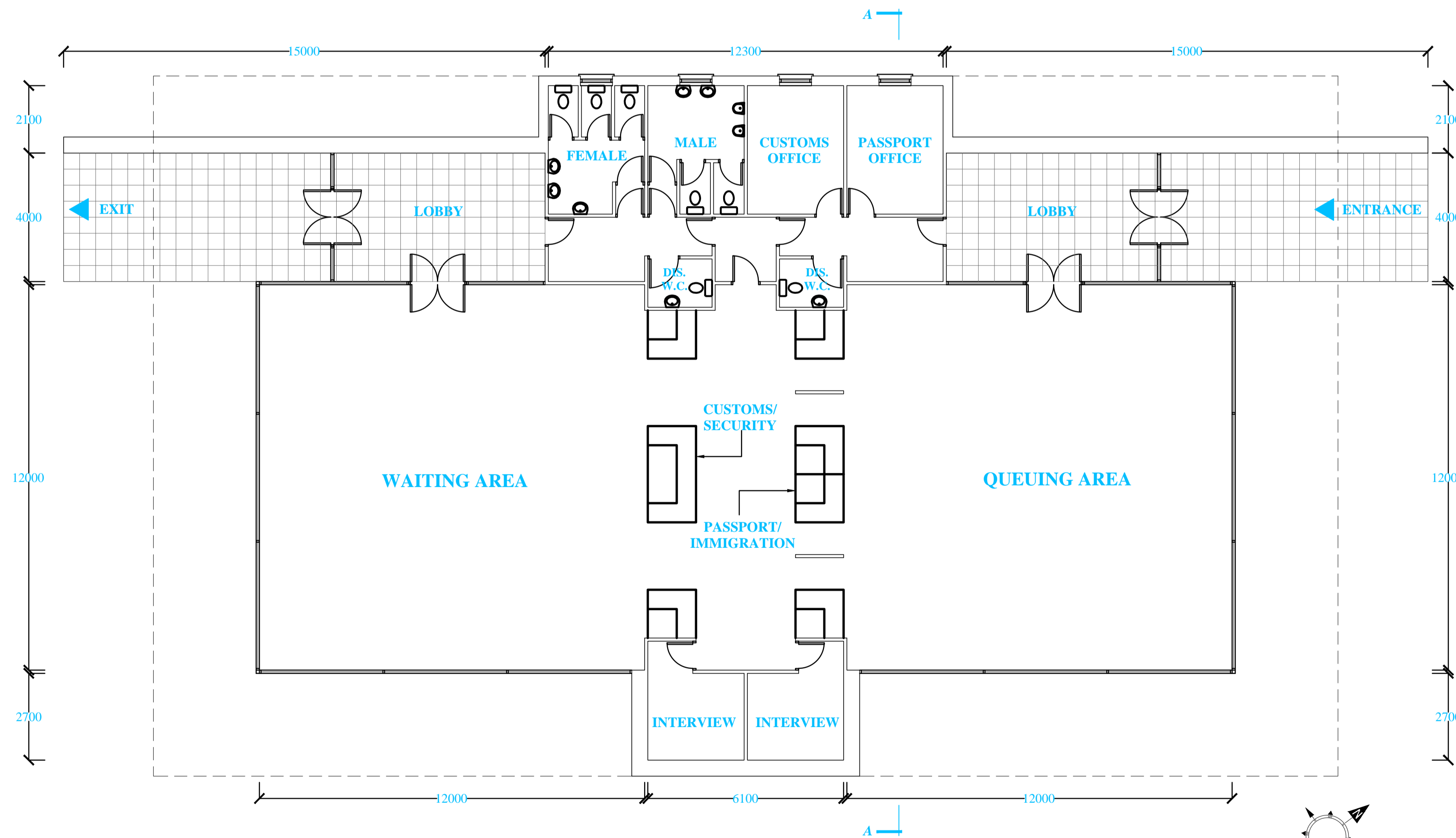
Stone gabions in contrasting bands of granite and limestone.



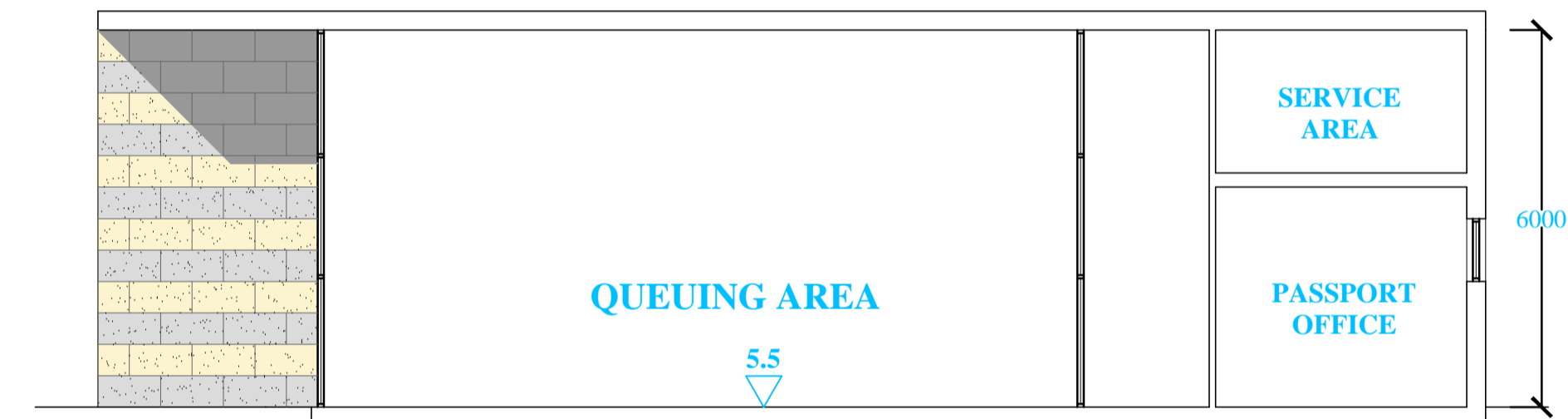
SIDE ELEVATION - 1 : 100



SIDE ELEVATION - 1 : 100



GROUND FLOOR PLAN - 1 : 100
512m²



SECTION A-A - 1 : 100